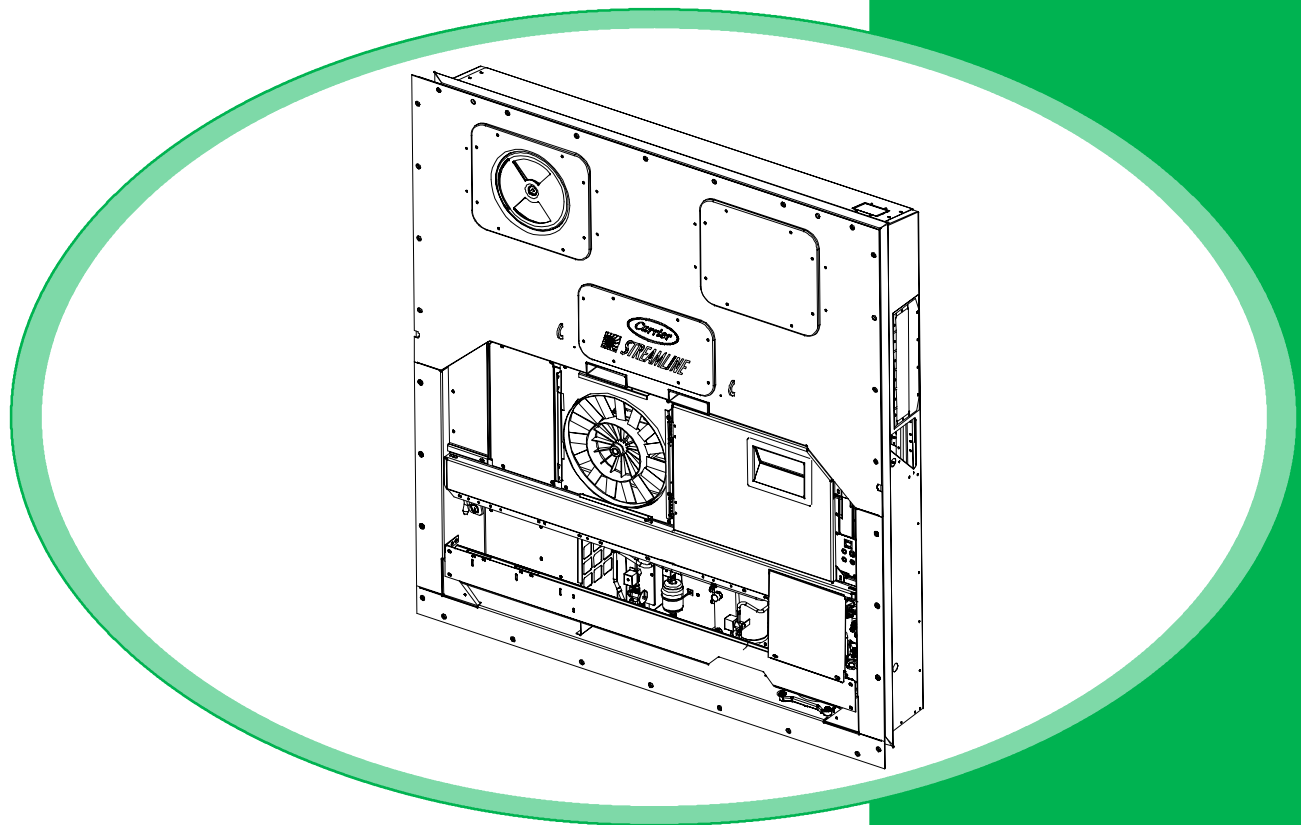


Carrier
Transicold
Container
Refrigeration

Model 69NT20-531-300 Streamline Scroll



Service Parts List



TRANSICOLD

SERVICE PARTS LIST CONTAINER REFRIGERATION UNIT

MODEL
69NT20-531-300
Streamline Scroll
Field Trial

Carrier Transicold, A member of the United Technologies family. Stock symbol UTX.
Carrier Transicold, Carrier Corporation, P.O. Box 4805, Syracuse, N.Y. 13221 U. S. A.

© Carrier Corporation 2002D Printed in U. S. A. 08/02



Carrier

A United Technologies Company

TABLE OF CONTENTS

INTRODUCTION	ii
CONFIGURATION IDENTIFICATION	ii
OPTION DESCRIPTIONS	ii
ORDERING INSTRUCTIONS	iii
LETTER DESIGNATIONS	iii
1. QUICK LIST - Clamps, Filter-Drier, Fuses, Ty-Raps, and Wire Terminals	1
2. REFRIGERATION UNIT ASSEMBLY	2
2.1 Refrigeration Unit - Area Locator	2
2.2 Control Box Door	4
2.3 Control Box - Composite	6
2.4 Control Box - Standard Electrical Components, Remote Monitoring and CFS	8
2.5 Control Box - Controller Module Section and Software Cards	10
2.6 Control Box - Display Module and Communications Interface Module Section	12
2.7 Condenser Fan Motor, Condenser Coil, Drain Kit, and Bolted or Hinged Grille Section	14
2.8 Compressor Tubing Section	16
2.9 Economizer, Economizer Expansion Valve, Economizer Solenoid Valve, Liquid Valve & Filter Drier Section	18
2.10 Receiver Section	20
2.11 STS and SRS Section	21
2.12 Oil Separator Section	22
2.13 Lower Fresh Air Makeup Vent	23
2.14 Upper Fresh Air Makeup and Access Panels	24
2.15 Evaporator Fan Assembly and Transfresh	26
2.16 Evaporator Coil Section	28
2.17 Back Panel Assembly - Aluminum Bolted	30
2.18 Compressor Mounting Components and Guard	32
2.19 Temperature Recorder - None	34
2.20 Compressor Transducers	35
2.21 Cable Restraint Components (Bungy Cords and J-Hooks)	36
2.22 Voltage Cables (460V)	37
2.23 Labels and Decals	38
3. INTERROGATOR AND ACCESSORIES	40
3.1 Datareader	40
3.2 Interrogator Receptacle	42
4. COMPRESSOR - SCROLL	44
5. CONTROLLER/DATACORDER	45
6. TOOLS	46
PART NUMBER INDEX	Index 1

INTRODUCTION

1 INTRODUCTION

The Carrier Transicold model 69NT20-531 series units are of lightweight aluminum frame construction, designed to fit in the front of a container and serve as the container front wall.

2 CONFIGURATION IDENTIFICATION

Unit identification information is provided on a plate located near the compressor. The plate provides the unit model number, the unit serial number and the unit parts identification number (PID). The model number identifies the overall unit configuration while the PID provides information on specific optional equipment, factory provision to allow for field installation of optional equipment and differences in detailed parts.

Configuration identification for the models covered herein are provided in the Carrier Transicold Container Unit Matrix manual, publication T-300. Printed copies of the T-300 may be obtained from Carrier Transicold. Also, a weekly updated copy may be found at the Carrier Web site, www.carrier.refrigeration.com.

3 OPTION DESCRIPTIONS

Various options may be factory or field fitted to the base unit. These options are listed in the tables and described in the following subparagraphs.

3.1 Battery

The refrigeration controller may be fitted with standard replaceable batteries or rechargeable battery pack.

3.2 Dehumidification

The unit may be fitted with a humidity sensor. This sensor allows setting of a humidity set point in the controller. In the dehumidification mode the controller will operate to reduce internal container moisture level.

3.3 Control Box

The control box may be of aluminum or composite material and each type box may be fitted with a lockable door.

3.4 Temperature Readout

The unit may be fitted with suction and discharge temperature sensors. The sensor readings may be viewed on the controller display.

3.5 Pressure Readout

The unit may be fitted with suction and discharge pressure gauges or suction and discharge transducers or no pressure readout. The transducer readings may be viewed on the controller display.

3.6 Interrogator

Units that use the DataCORDER function are fitted with interrogator receptacles for connection of equipment to download the recorded data. Two receptacles may be fitted, one accessible from the front of the container and

the other mounted inside the container (with the USDA receptacles).

3.7 Remote Monitoring

The unit may be fitted with a remote monitoring receptacle. This item allows connection of remote indicators for COOL, DEFROST and IN RANGE. Unless otherwise indicated, the receptacle is mounted at the control box location

3.8 Communications.

The unit may be fitted with a communications interface module. The communications interface module is a slave module which allows communication with a master central monitoring station. The module will respond to communication and return information over the main power line. Refer to the ship master system technical manual for further information.

3.9 Compressor

The unit is fitted with a scroll compressor.

3.10 Condenser Coil

The unit may be fitted with a 5 row coil using nominal 3/8 inch tubing, or the unit may be fitted with a 4 row coil using 7mm tubing. The required refrigerant charge is different for each coil.

3.11 Back Panels

Back panel designs that may be fitted include panels of aluminum and stainless steel. Panels may be fitted with access doors and/or hinge mounting.

3.12 460 Volt Cable

Various power cable and plug designs are available for the main 460 volt supply. The plug options tailor the cables to each customers requirements.

3.13 Cable Restraint

Various designs are available for storage of the power cables. These options are variations of the compressor section front cover.

3.14 Upper Air (Fresh Air Make Up)

The unit may be fitted with an upper fresh air makeup assembly. The openings may also be fitted with screens.

3.15 Evaporator

The unit is fitted with an evaporator coil and a hermetic thermal expansion valve.

3.16 Evaporator Fan Operation

The units are fitted with Normal Evaporator Fan Operation, opening of an evaporator fan internal protector will shut down the unit.

3.17 Labels

Operating Instruction and Function Code listing labels will differ depending on the options installed. For example, additional operating instructions are required to describe start-up of a unit equipped with an autotransformer. Where the labels are available with additional languages, they are listed in the parts list.

3.18 Plate Set

Each unit is equipped with a tethered set of wiring schematic and wiring diagram plates.

The plate sets are ordered using a seven digit base part number and a two digit dash number. (See **Unit Matrix Manual, T-300**)

3.19 Controller

Replacement controllers may be ordered as a universal un-configured controller (without configuration software) or configured.

3.20 Stepper Drive

All the units covered by this manual have suction modulating valves which act to control system capacity.

Units indicated as being fitted with “stepper drive” have digital control motors fitted to the suction modulating valve to open and close the valve in steps as required.

3.21 Condenser Grille

Two styles of condenser grilles are available, direct bolted grilles and hinged grilles.

OPTION LEGEND

GENERAL

- = Feature Not Applicable
- X = Features that apply to model
- P = Factory Installation of Equipment to Allow Field Installation

BATTERY CODES

- S = Standard Cells
- R = Rechargeable Cells

CONTROL BOX CODES

- C = Composite Box Without Door Lock
- CL = Composite Box With Door Lock

PRESSURE READOUT CODES

- T = Factory Installed Pressure Transducers

INTERROGATOR CODES

- 1 = Left Straight Mount

COMMUNICATIONS CODES

- 1 = Standard
- 2 = High Data Rate
- 3 = Chipset Modem
- 3L = Low Data Rate

COMPRESSOR CODES

- S = Scroll

CONDENSER COIL CODES

- 4 = Four Row (7mm) Coil

BACK PANEL CODES

- 1 = Bolted Panels

460 VOLT CABLE CODES

- 1 = Option 1

CABLE RESTRAINT CODES

- 2 = Left Bungy Cord Only
- 3 = J-Hook

UPPER AIR CODES

- 1 = No Upper Fresh Air
- 2 = Upper Fresh Air Installed
- 3 = Upper Fresh Air Installed with Screens

CONDENSER GRILLE CODES

- B = Bolted Grille
- H = Hinged Grille

EVAPORATOR CODES

- 4 = Helicox Hatched

EVAPORATOR FAN CODES

- 1 = Normal Evaporator Fan Operation

LABEL CODES

- 1 = English

Ordering Instructions

All orders and inquiries for parts must include: Parts Identification Number (**PID**), Model Number, Unit Serial Number, Part Number, Description of part as shown on list and Quantity required. Address all correspondence for parts to the following address:

CARRIER TRANSICOLD DIVISION
Replacement Components Group, TR-20
P.O. Box 4805, Syracuse, New York 13221
or FAX to: (315) 432-3778

Letter Designations

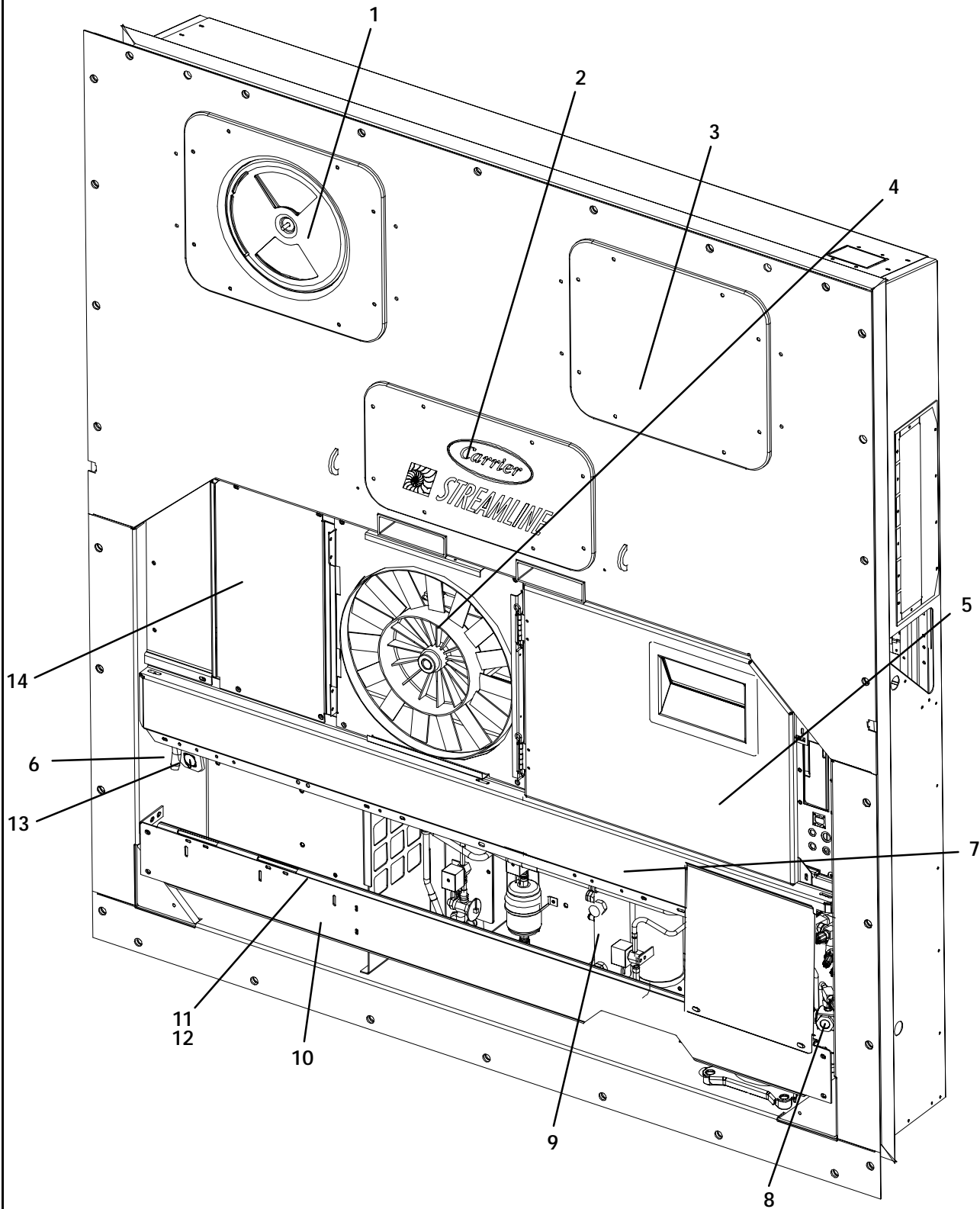
The following letter designations are used to classify parts throughout this list:

- A/R = *As Required*
- N/A = *Not Available*
- NS = *Not shown in illustration*
- NSS = *Not sold separately* - Order next higher assembly or kit
- PID = *Parts Identification Number* - essential to identify unit configuration.
- PL = *Purchase Locally*
- SST = *Stainless Steel* - 300 Series unless otherwise specified.
- SV = *Suffix SV* - added to part number designates service replacement part.

1 QUICK LIST - CLAMPS, FILTER-DRIER, FUSE, TY-RAPS, AND WIRE TERMINALS

PART NO.	DESCRIPTION
34-00373-51	Clamp, Tube, 1/4 - SST
34-00373-53	Clamp, Tube, 3/8 - SST
34-00373-05	Clamp, Tube, 1/2 - SST
34-00373-07	Clamp, Tube, 5/8 - SST
34-00373-59	Clamp, Tube, 3/4 - SST
34-00373-11	Clamp, Tube, 7/8 - SST
34-00373-65	Clamp, Tube, 1-1/8 - SST
34-00373-67	Clamp, Tube, 1-1/4 - SST
34-00373-69	Clamp, Tube, 1-3/8 - SST
34-00373-71	Clamp, Tube, 1-1/2 - SST
22-00066-01	Connector, Butt End, Wire Range - 22 to 16 AWG
22-00066-02	Connector, Butt End, Wire Range - 16 to 14 AWG
22-00066-03	Connector, Butt End, Wire Range - 12 to 10 AWG
22-00041-00	Connector, Closed End, Wire Range - 22 to 14 AWG
22-00041-02	Connector, Closed End, Wire Range - 18 to 10 AWG
66U1-7472-1	Filter-Drier
22-02336-02	Fuse, 5 Amp (F1 & F2)
22-02336-04	Fuse, 10 Amp (F3 & F4)
22-01140-01	Ring Terminal, #6, Wire Range - 12 to 10 AWG
22-01140-02	Ring Terminal, #10, Wire Range - 12 to 10 AWG
22-01140-04	Ring Terminal, 3/8, Wire Range - 12 to 10 AWG
22-00119-04	Ring Terminal, 1/4, Wire Range - 12 to 10 AWG
22-00120-04	Ring Terminal, #10, Wire Range - 16 to 14 AWG
22-00120-07	Ring Terminal, 5/16, Wire Range - 16 to 14 AWG
22-00121-07	Ring Terminal, #10, Wire Range - 22 to 16 AWG
22-01139-04	Ring Terminal, 3/8, Wire Range - 16 to 14 AWG
22-01141-01	Spade Terminal, 1/4 x 5/16, Wire Range - 16 to 14 AWG
22-00595-01	Spade Terminal, 3/8, Wire Range - 12 to 10 AWG
22-01106-00	Spiral Wrap, 1/4 Diameter x 25 ft. lg.
22-01107-00	Spiral Wrap, 1/2 Diameter x 25 ft. lg.
66U1-3803	Tube, Heat Shrink, 1/4 ID x 2-1/8 lg.
66U1-3803-1	Tube, Heat Shrink, 1/2 ID x 2-3/4 lg.
44-01043-05	Ty-Raps, 5-1/2 inches lg.
44-01043-07	Ty-Raps, 11.00 inches lg.
22-50007 Series	Wire Markers
07-00345-00	Sealant, Pipe (Used to seal fittings on unit with R-134a)
07-00313-00	Cleaner, Coil
76-00397-00	Paint, Compressor Touch-Up, Blue

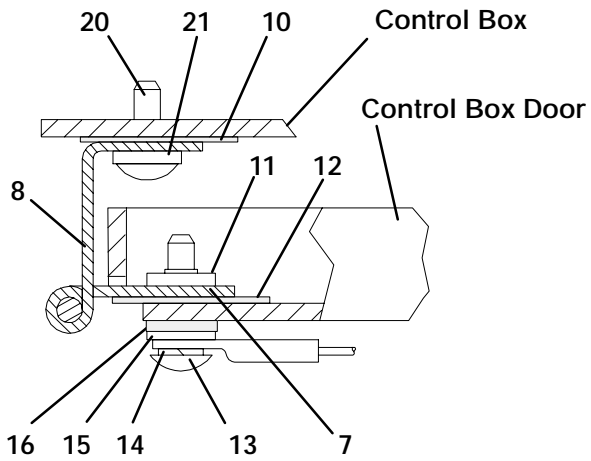
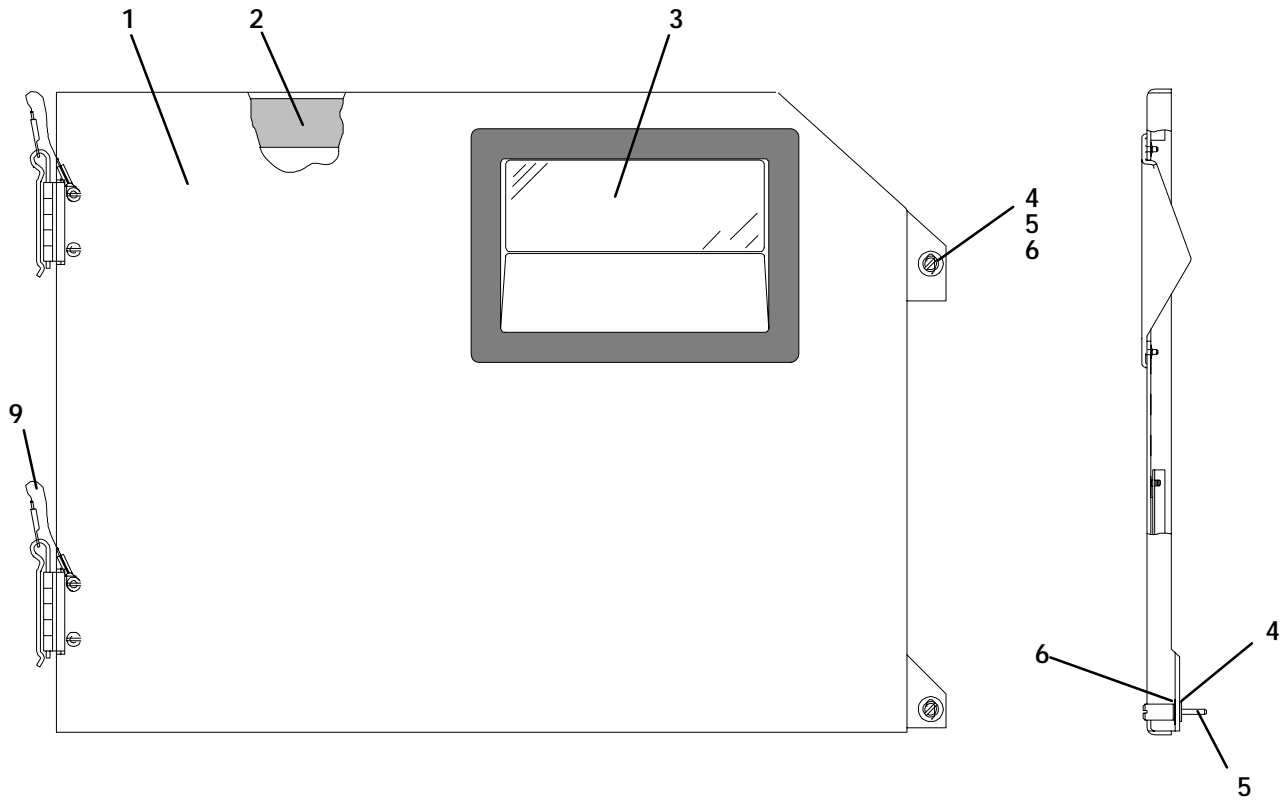
2 REFRIGERATION UNIT ASSEMBLY
2.1 REFRIGERATION UNIT - AREA LOCATOR



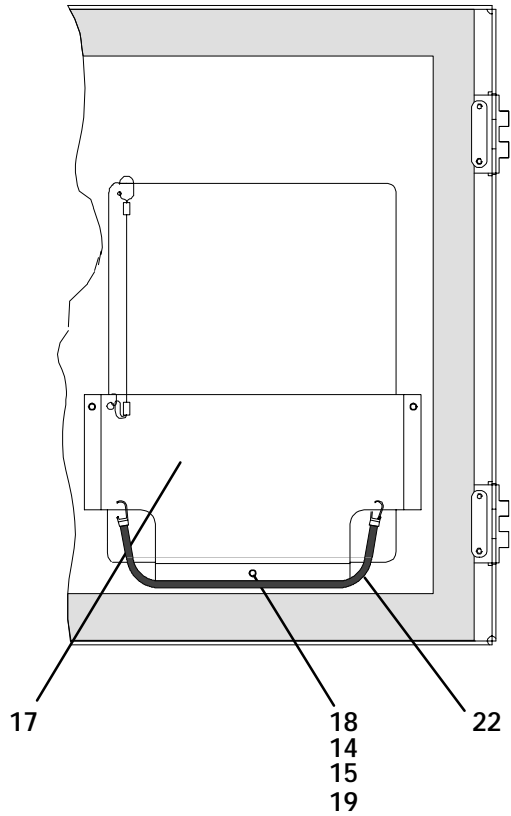
2.1 REFRIGERATION UNIT - AREA LOCATOR

Item	Section Number	Area Description
1	Refer to Section 2.14	Upper Fresh Air Makeup & Access Panels
2	Refer to Section 2.23	Labels and Decals
3	Refer to Section 2.15	Evaporator Fan Assembly
4	Refer to Section 2.7	Motor, Condenser Fan
5	Refer to Section 2.2 - 2.6	Box, Control
6	Refer to Section 2.7	Drain Hose
7	Refer to Section 2.7	Coil, Condenser
8	Refer to Sections 2.18 or 4	Compressor
9	Refer to Section 2.10	Receiver
10	Refer to Section 2.18	Guard, Compressor
11	Refer to Section 2.22	Cable, Power
12	Refer to Section 2.22	Plug, Power
13	Refer to Section 3	Interrogator and Accessories
14	Refer to Section 2.19	Blank-off Plate, Temperature Recorder

2.2 CONTROL BOX DOOR



HINGE ASSEMBLY - SECTIONAL VIEW

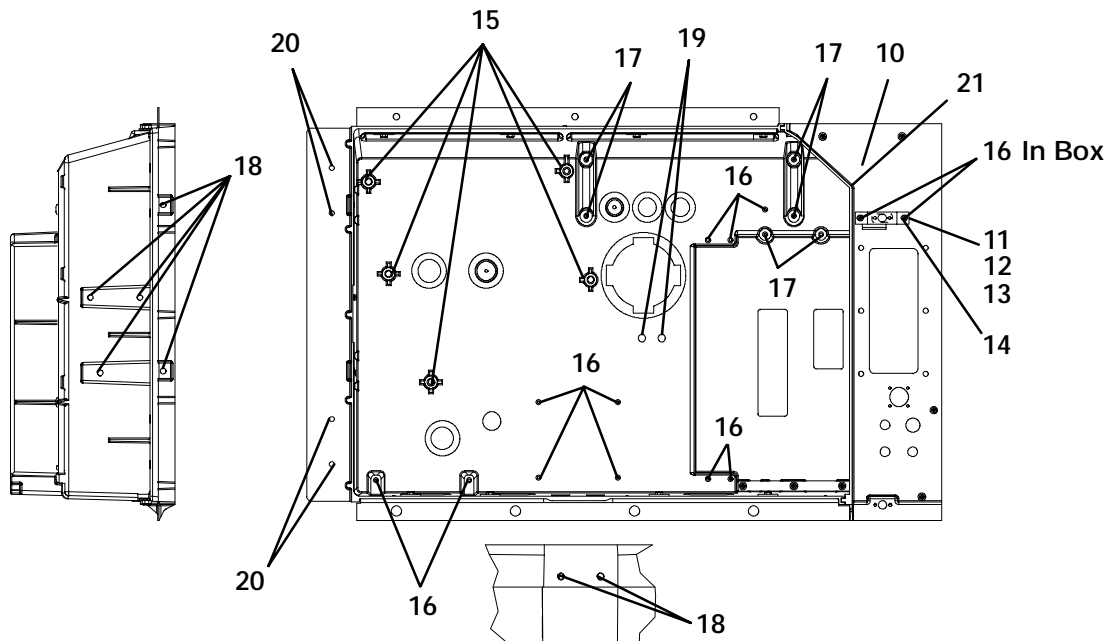
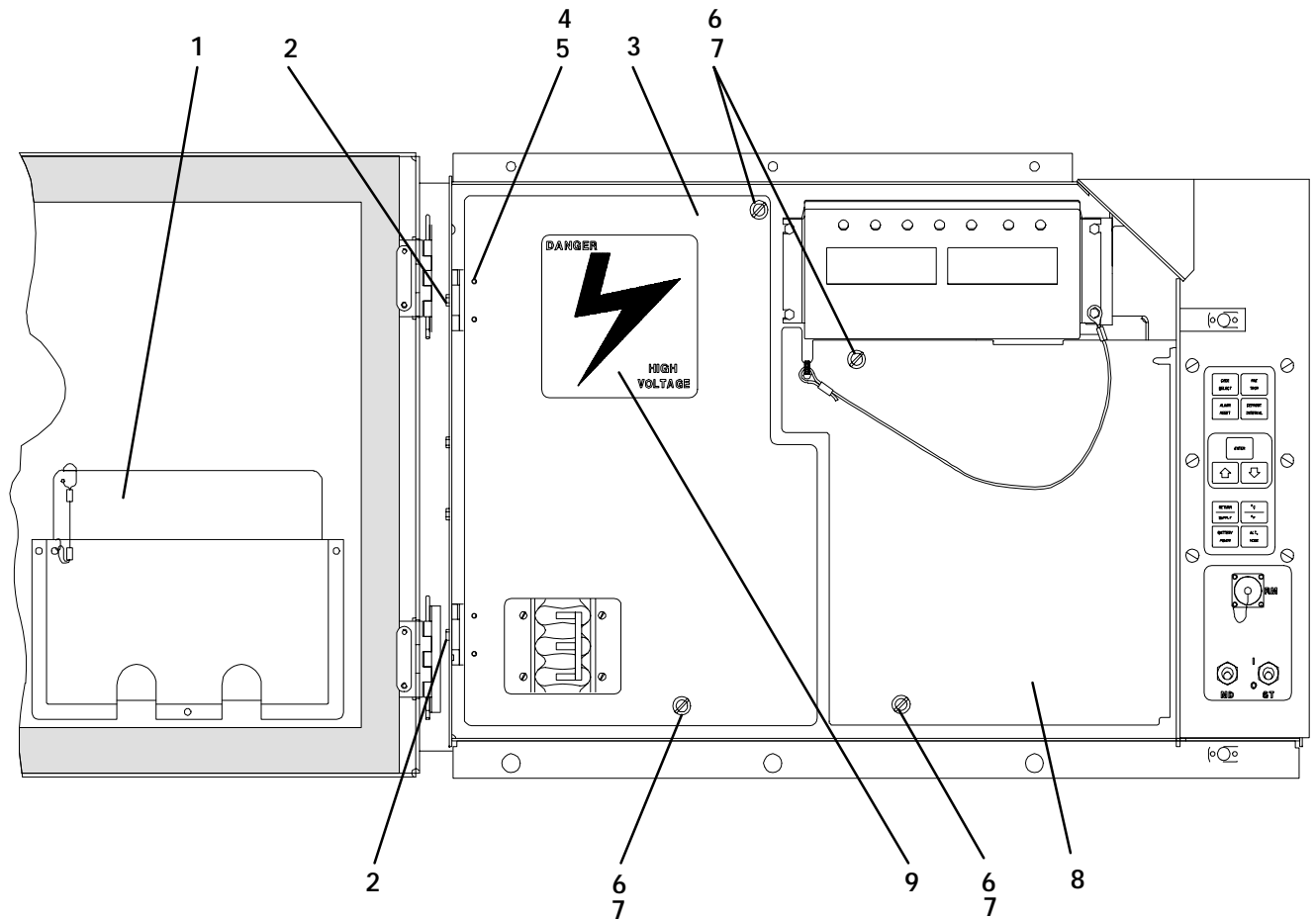


DOOR ASSEMBLY - PARTIAL BACK VIEW

2.2 CONTROL BOX DOOR

Item	Part Number	Description	Qty
1	69NT42-688-7	Door Assembly - Includes:	1
2	42-00270-02	Gasket, Door	1
3	58-04366-00SV	Window and Gasket Assembly, Control Box Door - Lexan	1
4	34-06169-00	Washer, Retaining - SST	2
5	66U1-6811-8	Screw, Retaining, Panel, 0.300-0.625 - SST	2
5	66U1-6811-15	Screw, Retaining, Wing, 0.300-0.625 - SST	2
6	34-06053-00	Washer, Mylar, 0.250 ID x 0.800 OD	4
7	44-00300-01	Hinge, Half	1
8	44-00300-02	Hinge, Half	1
9	44-00300-03	Pin Assembly, with Tether	1
10	58-04101-01	Protector, Mylar (Hinge) (Not Needed with Composite Box)	2
11	34-01167-01	Retainer, Nut	2
12	58-04101-00	Protector, Mylar (Hinge)	2
13	66U1-2403-1	Screw, Truss Head, #10-24 x 3/4 lg. - SST	4
14	34-00663-09	Washer, Lock, #10 - SST	4
15	66U1-5321-8	Washer, Flat, #10 - SST	4
16	34-06053-05	Washer, Mylar, 0.205 ID x 0.600 OD	4
17	68-13577-00	Pocket, Placard	1
18	34-00665-09	Locknut, Hex Head, #10-24 - SST	3
19	34-06107-00	Rivet, Blind, 1/8 Diameter, Grip Range - 0.188-0.250	3
20	66U1-5371-7	Screw, #10-24 x 1/2 lg. - SST	4
21	66U1-5321-8	Washer, Flat, #10 - SST	4
22	58-04346-00	Door Strap Kit	1

2.3 CONTROL BOX



OPTION C & CL - COMPOSITE BOX

2.3 CONTROL BOX

Item	Part Number	Description	Qty
1	-	Plate, Schematic & Diagram (Refer to T-300, Container Unit Matrix)	1
2	66U1-2403	Screw, Truss Head, #10-24 x 1/2 lg. - SST	2
3	69NT43-125-1	Shield, High Voltage (Plastic) - Includes:	1
4	44-00343-00	Hinge	2
5	34-00928-02	Rivet, Blind, 1/8 Diameter, Grip Range - 1/8-3/16 - SST	4
6	34-50015-00	Stud & Retainer Package - Includes:	4
NS	NSS	Stud, Fastener	1
NS	NSS	Retainer, Fastener Stud	1
7	34-06139-03	Receptacle	4
8	69NT43-124-2	Shield, Low Voltage (Lexan) - With Tether	1
9	62-03957-01	Label, Danger-High Voltage	1

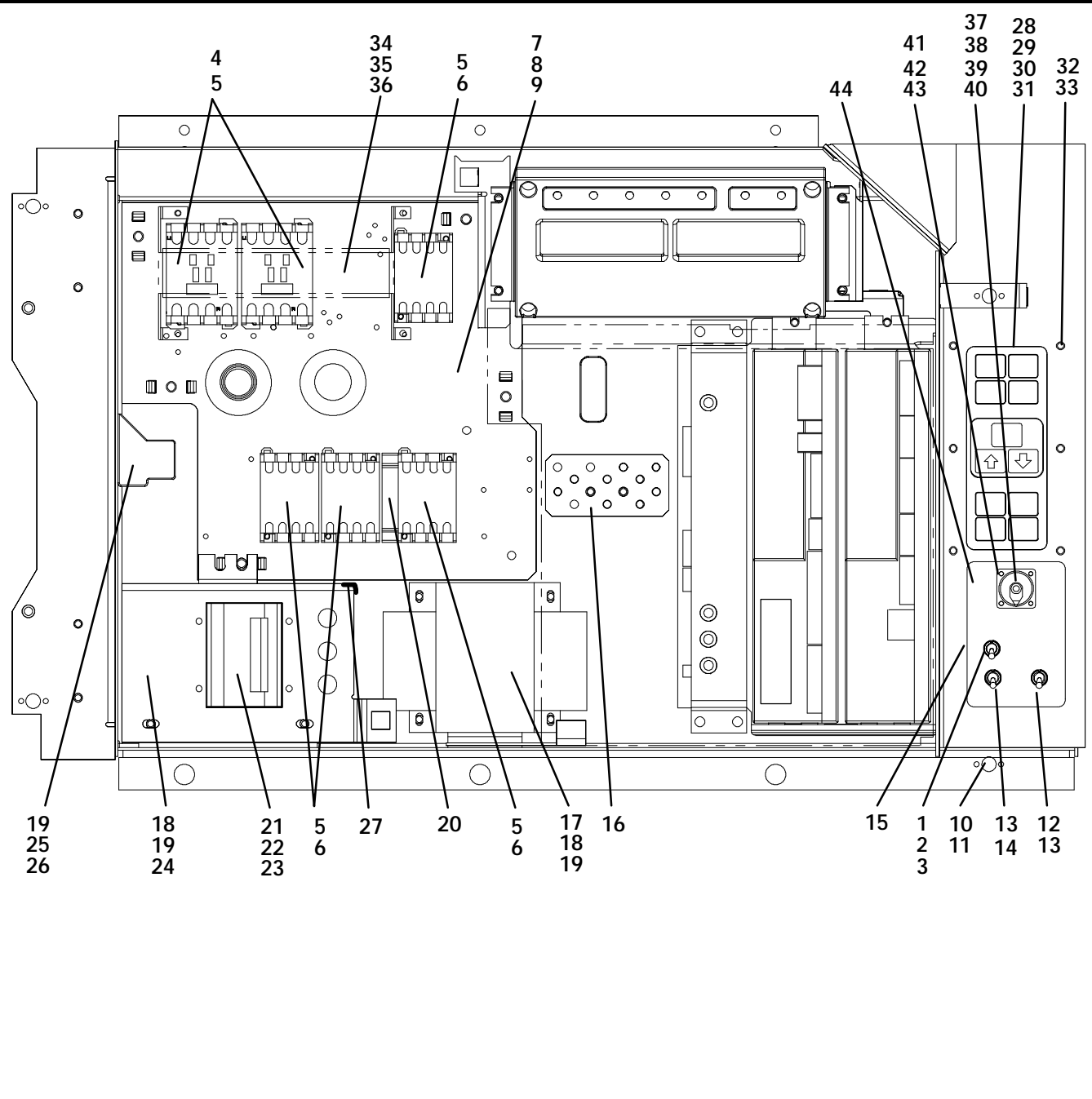
OPTION C & CL - COMPOSITE CONTROL BOX

10	58-04367-02	Control Box, Standard Composite	1
11	69NT35-6272	Bracket, Non-Locking	1
	69NT35-2287	Bracket, Locking (See Note 3)	1
12	34-01142-01	Receptacle, Retaining	1
13	34-00928-01	Rivet, Blind, 1/8 Diameter, Grip Range - 1/16 - 1/8	2
	34-00928-02	Rivet, Blind, 1/8 Diameter, Grip Range - 1/18 - 3/16 (See Note 4)	2
14	66U1-2403	Screw, Truss Head, #10-24 x 1/2 lg. - SST	2
NS	76-00724-00SV	Crack, Chip and Hole Repair Kit	1
NS	76-50084-00SV	Insert Repair Kit - Includes:	1
15	34-06231-01	Insert - 17.53 x 9.91 mm (.690 x .390 in) 1/4-20 Threads - NSS	10
16	34-06231-03	Insert - 15.88 x 6.35 mm (.625 x .250 in) 10-24 Threads - NSS	10
17	34-06231-04	Insert - 25.15 x 7.54 mm (.990 x .297 in) 10-24 Threads - NSS	10
18	34-06231-05	Insert - 10.16 x 9.53 mm (.400 x .375 in) 10-24 Threads - NSS	10
19	34-06231-06	Insert - 12.70 x 9.91 mm (.500 x .390 in) 1/4-20 Threads - NSS	10
20	34-06231-07	Insert - 9.53 x 6.76 mm (.375 x .266 in) 10-24Threads - NSS	10
21	66U1-2593-19	Gasket, Control Box	1
NS	02-00082-00	Durabond Epoxy - NSS	1
NS	07-00390-00	Static Mixing Tube - NSS	1
NS	07-00391-00	Application Gun - Required for Insert Repair	1

NOTES

3. The bracket is bolted to the control box - order 69NT35-2287 for locking bracket.
4. When 69NT35-2287 is used, 34-00928-02, rivet, is to be used in the upper door location.

2.4 CONTROL BOX - SHIELDS REMOVED, STD ELECTRICAL COMPONENTS, RM AND CFS



OPTION F - CONDENSER FAN SWITCH

Item	Part Number	Description	Qty
1	10-00298-01	Switch, Toggle (CFS)	1
2	66U1-9752	Seal, Bushing	1
3	58-04145-06	Plate, Switch (with extra switch location)	1

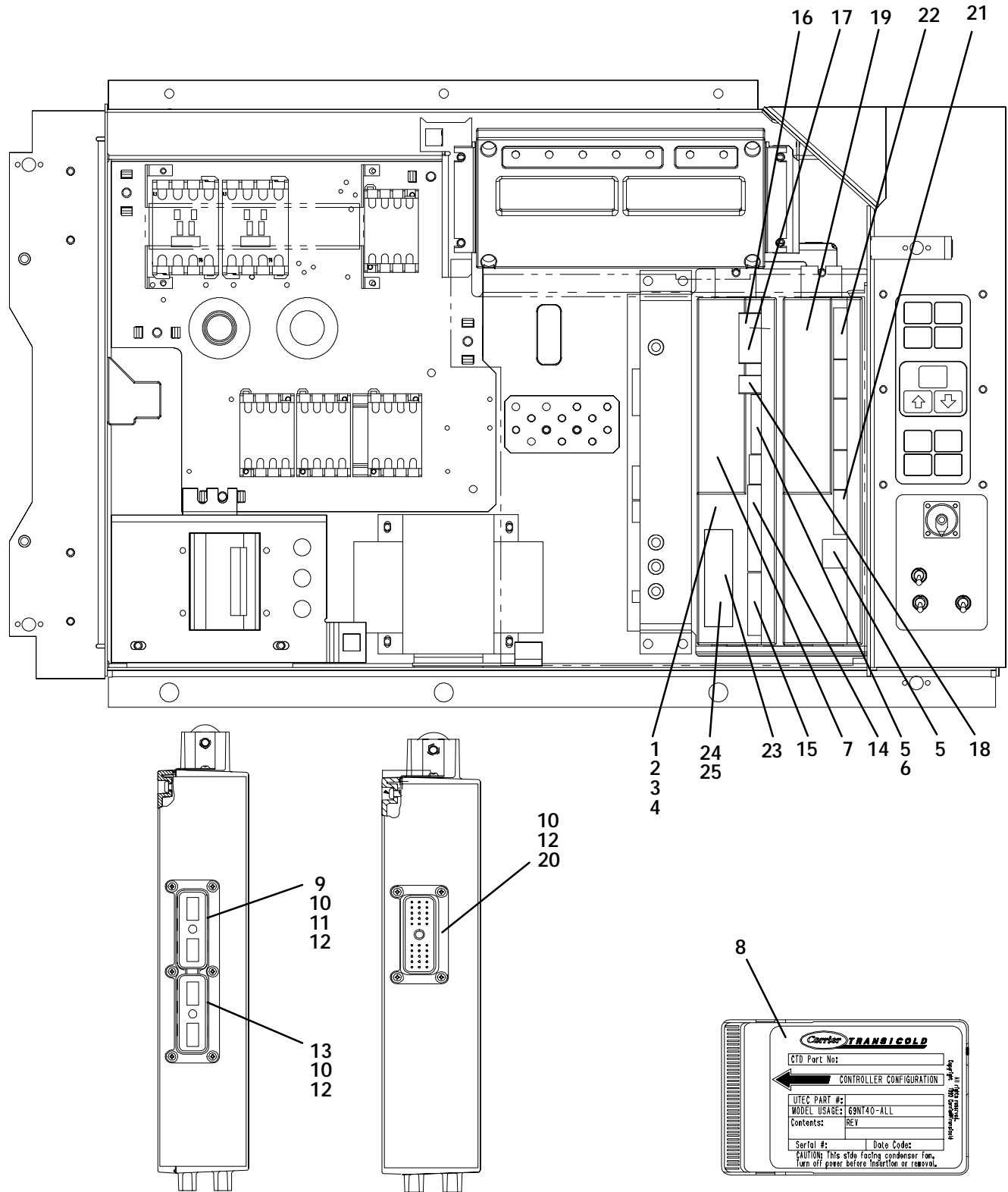
OPTION 1 - NORMAL EVAPORATOR FAN OPERATION

See Items 4 and 6 for correct contactor placement

2.4 CONTROL BOX - SHIELDS REMOVED, STANDARD ELECTRICAL COMPONENTS (Continued)

Item	Part Number	Description	Qty
4	10-00333-01	Contactor, Compressor (CH) (30 Amp)	2
5	34-06211-01	Screw, Hex Head w/ Washer, #8-32 x 5/8 lg. - SST	12
6	10-00333-00	Contactors, (CF), (HR) & (EF & ES) (12 Amp)	4
7	68-13427-00SV	Panel, Contactor - Includes:	1
8	58-00967-00	Spacer (Used with sheet metal control box only)	5
9	34-06224-01	Screw, Hex Head, Captive Washer 1/4-20 x .62 lg. - SST	4
10	34-00928-01	Rivet, Blind, 1/8 Diameter, Grip Range - 1/16 - 1/8	6
11	34-01142-01	Receptacle	1
12	10-01129-07	Switch, Toggle (On-Off)	1
13	66U1-9752	Seal, Bushing	2
14	10-01129-10	Switch, Toggle (MDS)	1
15	58-04145-01	Plate, Switch	1
16	69NT41-982-3	Strap, Copper	1
17	10-00332-21SV	Transformer, Base Unit	1
18	66U1-5371-7	Screw, Hex Head, #10-24 x 1/2 lg. - SST	A/R
19	66U1-5321-8	Washer, Flat, #10 - SST	A/R
20	10-00333-02	Contact, Auxiliary	1
21	34-00663-07	Washer, Lock, #6 - SST	4
22	66U1-7842-13	Circuit Breaker - 460 vac, 25 Amp, (CB1)	1
23	66U1-6651-4	Screw, Pan Head, #6-32 x 3/8 lg. - SST	4
24	69NT35-6278	Bracket, Circuit Breaker	1
25	10-00439-01	Transformer, Current Sensing (CS)	1
26	34-06223-00	Screw, Captive Washer, #10-24 x .56 lg. - SST	2
27	66CH1-1172-46	Trim, Flexible (85 Feet Long, Cut to Length)	A/R
28	79-01706-03SV	Pad, Key - Includes:	1
29	NSS	Gasket (Between Key Pad Plate Assembly and Connector)	1
30	NSS	Gasket (Between Key Pad and Key Pad Plate Assembly)	1
31	NSS	Plate Assembly, Key Pad Mounting	1
32	34-06227-00	Screw, Pan Head, #10-24 X 3/4 lg. - SST	6
33	66U1-5321-8	Washer, Plain, #10	6
34	58-04260-00	Cover, Clear	1
35	66U1-5391-2	Screw, Pan Head (Thread Cutting), #8-32 x 1/2 lg. - SST	4
36	34-00662-08	Washer, Plain, #8	4
REMOTE MONITORING (STANDARD LOCATION)			
37	22-02341-00	Receptacle, Remote Monitoring (RM)	1
38	22-02368-00	Plug, Remote Monitoring	1
39	22-02341-01	Cap and Tether, Receptacle Assembly	1
40	66U1-6835	Gasket, Remote Monitoring Receptacle	1
41	34-00848-10	Screw, Round Head, #4-40 x 5/8 lg. - SST	4
42	66U1-5321-6	Washer, Flat, 0.125 ID - SST	4
43	34-00667-05	Nut, Self Locking, #4-40 - SST	4
44	58-04145-00	Plate, Switch, with RM	1

2.5 CONTROL BOX - CONTROLLER MODULE SECTION AND SOFTWARE CARDS

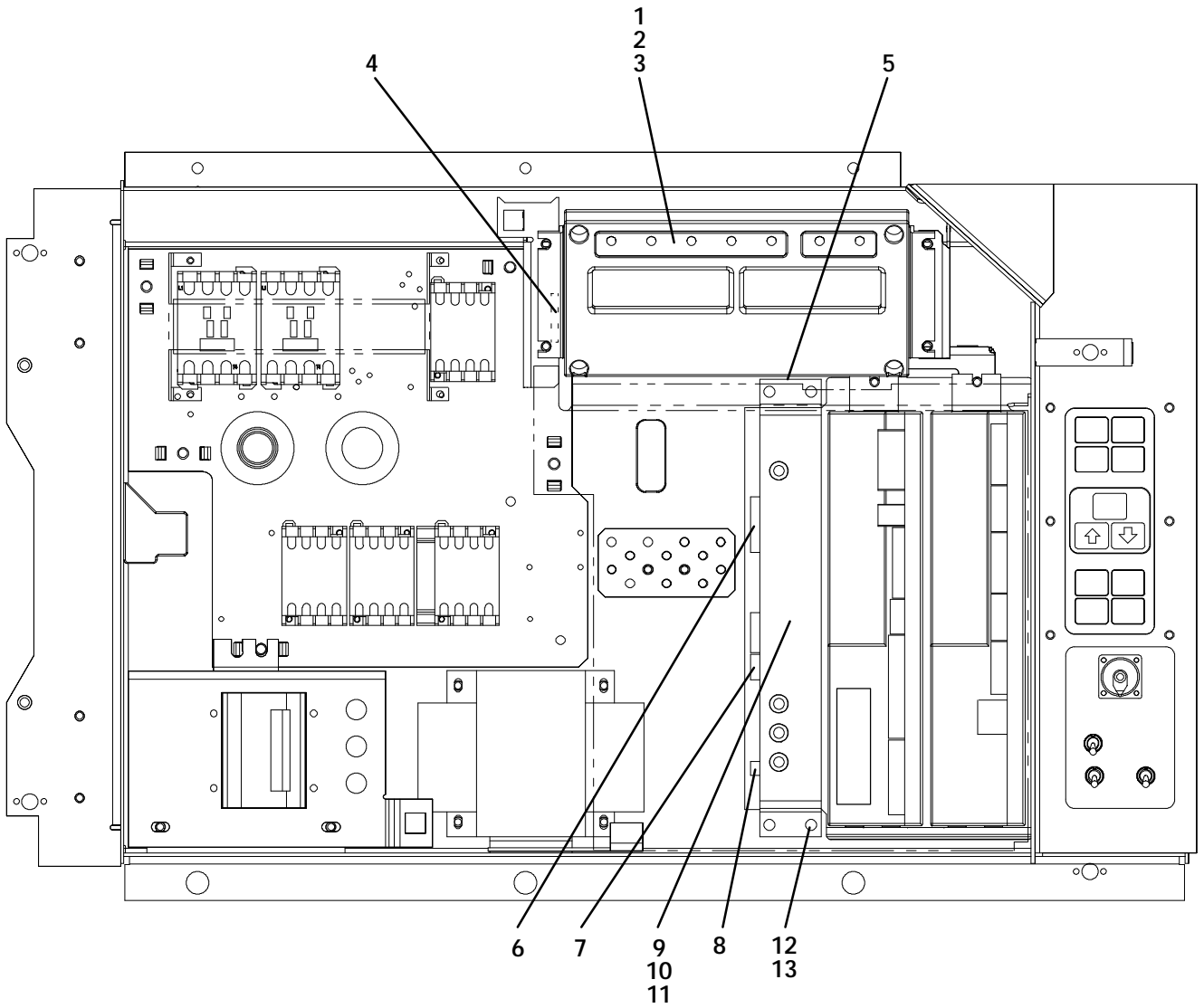


View - Back of Controller/DataCORDER and Expansion Modules

2.5 CONTROL BOX - CONTROLLER MODULE SECTION AND SOFTWARE CARDS

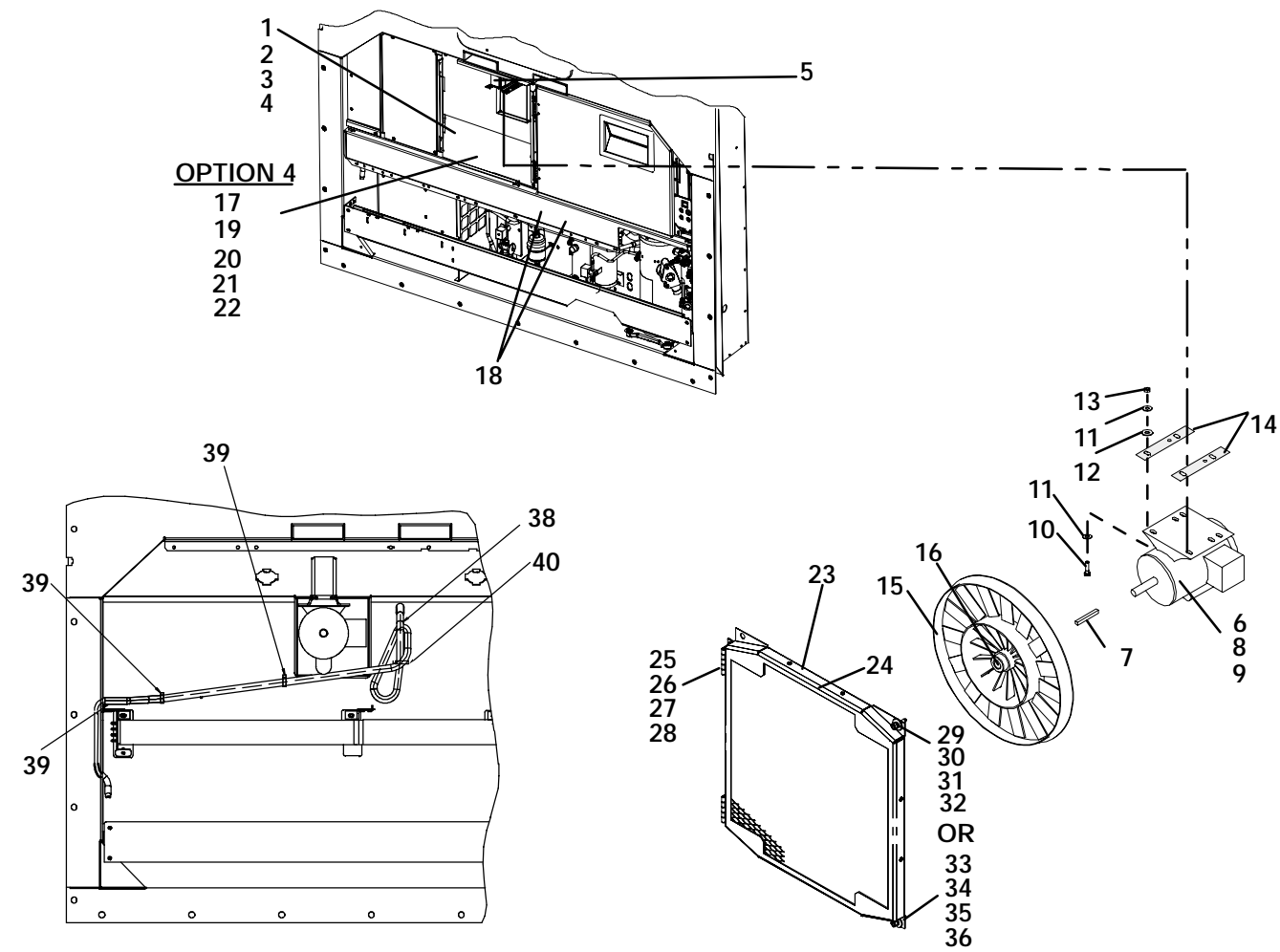
Item	Part Number	Description	Qty
1	-	Module, Controller/DataCORDER - Refer to Section 5 - Includes:	-
2	66U1-5371-7	Screw, Hex Head, #10-24 x 1/2 lg. - SST	1
3	69NT35-2692	Washer, Fender, 0.063 Thick - SST	1
4	58-01184-00	Retainer, Screw, 0.141 ID	1
5	22-02336-04	Fuse, 10 Amp (F3 & F4)	2
6	22-02336-02	Fuse, 5 Amp (F1 & F2)	2
7	62-02719-00	Label, Controller/DataCORDER Port	1
8	12-00397-00	Card, Controller/DataCORDER Operation Software (Contact Carrier Transicold service engineering for software)	1
NS	12-00402-45	Card, Configuration Software	1
9	22-01777-00SV	Connector (EC A-K) - 30 Pin	1
10	22-01777-03	Socket, 20 AWG	35
11	22-50100-00	Socket, 18 AWG	4
12	22-01777-04	Plug, Sealing	21
13	22-01777-01SV	Connector (EC L-Y) - 30 Pin	1
14	22-01556-02	Connector (KA) - 14 Pin	1
15	22-01556-01	Connector (KB) - 10 Pin	1
NS	22-01621-23	Connector (KP) - 9 Pin (Connects to Ribbon Cable)	1
16	22-01622-01	Connector (MA) - 12 Pin	1
17	22-01622-02	Connector (MB) - 16 Pin	1
18	22-01622-00	Connector (MC) - 8 Pin	1
19	12-55484-00	Module, Controller Expansion	1
20	22-01777-05	Connector (EE A-K) - 30 Pin	1
21	22-01556-06	Connector (KE) - 7 Pin	1
22	22-01556-07	Connector (KR) - 8 Pin	1
NS	09-00369-00SV	Battery, Real Time Clock, (Within the Controller)	1
NS	22-50157-00	Wire Harness, Controller to Current Sensing Transformer)	1
NS	22-01713-06	Wire Harness, Display Module to Controller/DataCORDER Module	1
NS	62-02735-00	Label, Warning, Don't use 12-00327 ! -(Located on the control box behind the Controller/DataCORDER module.)	1
NS	62-02738-08	Label, Warning, 53xx Series - (Located on the high & low voltage shields)	1
NS	62-02738-04	Label, Warning, 53xx Series - (Located on the bottom panel of the control box between the Communications Interface module and the switch panel.)	1
OPTION R - RECHARGEABLE BATTERY PACK			
23	30-00407-02SV	Battery Pack - Controller/DataCORDER Module	1
OPTION S - STANDARD CELLS			
24	PL	Battery ("AA")	6
25	30-00407-00	Cover, Controller Battery	1

2.6 CONTROL BOX - DISPLAY MODULE AND COMMUNICATIONS INTERFACE MODULE SECTION



2.6 CONTROL BOX - DISPLAY MODULE AND COMMUNICATIONS INTERFACE MODULE SECTION			
Item	Part Number	Description	Qty
1	12-00433-00RP	Module, Display	1
2	66U1-5371-7	Screw, Hex Head, #10-24 x 1/2 lg. - SST	4
3	69NT35-2692-4	Washer, Fender, 0.063 Thick - SST	4
4	22-01621-03	Connector (MK) - 9 Pin	1
5	22-01621-02	Connector (MB) - 16 Pin	1
6	22-02396-03	Connector (CIC) - 7 Pin	1
7	22-02396-02	Connector (CIB) - 3 Pin	1
8	22-01556-00	Connector (CIA) - 7 Pin	1
NS	22-01713-02	Wire Harness, Key Pad to Display Module	1
OPTION 1 - COMMUNICATIONS INTERFACE MODULE - STANDARD			
9	12-00275-04SV	Module, Communications Interface - Includes:	1
10	66U1-3442-2	Stud, Fastener, 1/4 turn, 0.705 lg. - SST	4
11	66U1-9212-1	Retainer, Push-on	4
12	34-06223-00	Screw, Captive Washer #10-24 x 0.56 - SST	4
13	58-01184-00	Retainer, Screw .75 O.D.	4
OPTION 2 - COMMUNICATIONS INTERFACE MODULE - HIGH DATA RATE			
9	12-00275-10SV	Module, Communications Interface - Includes:	1
10	66U1-3442-2	Stud, Fastener, 1/4 turn, 0.705 lg. - SST	4
11	66U1-9212-1	Retainer, Push-on	4
12	34-06223-00	Screw, Captive Washer #10-24 x 0.56 - SST	4
13	58-01184-00	Retainer, Screw .75 O.D.	4
OPTION 3 - COMMUNICATIONS INTERFACE MODULE - CHIPSET MODEM			
9	12-00275-17SV	Module, Communications Interface - Includes:	1
10	66U1-3442-2	Stud, Fastener, 1/4 turn, 0.705 lg. - SST	4
11	66U1-9212-1	Retainer, Push-on	4
12	34-06223-00	Screw, Captive Washer #10-24 x 0.56 - SST	4
13	58-01184-00	Retainer, Screw .75 O.D.	4
OPTION 4 - COMMUNICATIONS INTERFACE MODULE - LOW DATA RATE			
9	12-00275-19SV	Module, Communications Interface - Includes:	1
10	66U1-3442-2	Stud, Fastener, 1/4 turn, 0.705 lg. - SST	4
11	66U1-9212-1	Retainer, Push-on	4
12	34-06223-00	Screw, Captive Washer #10-24 x 0.56 - SST	4
13	58-01184-00	Retainer, Screw .75 O.D.	4

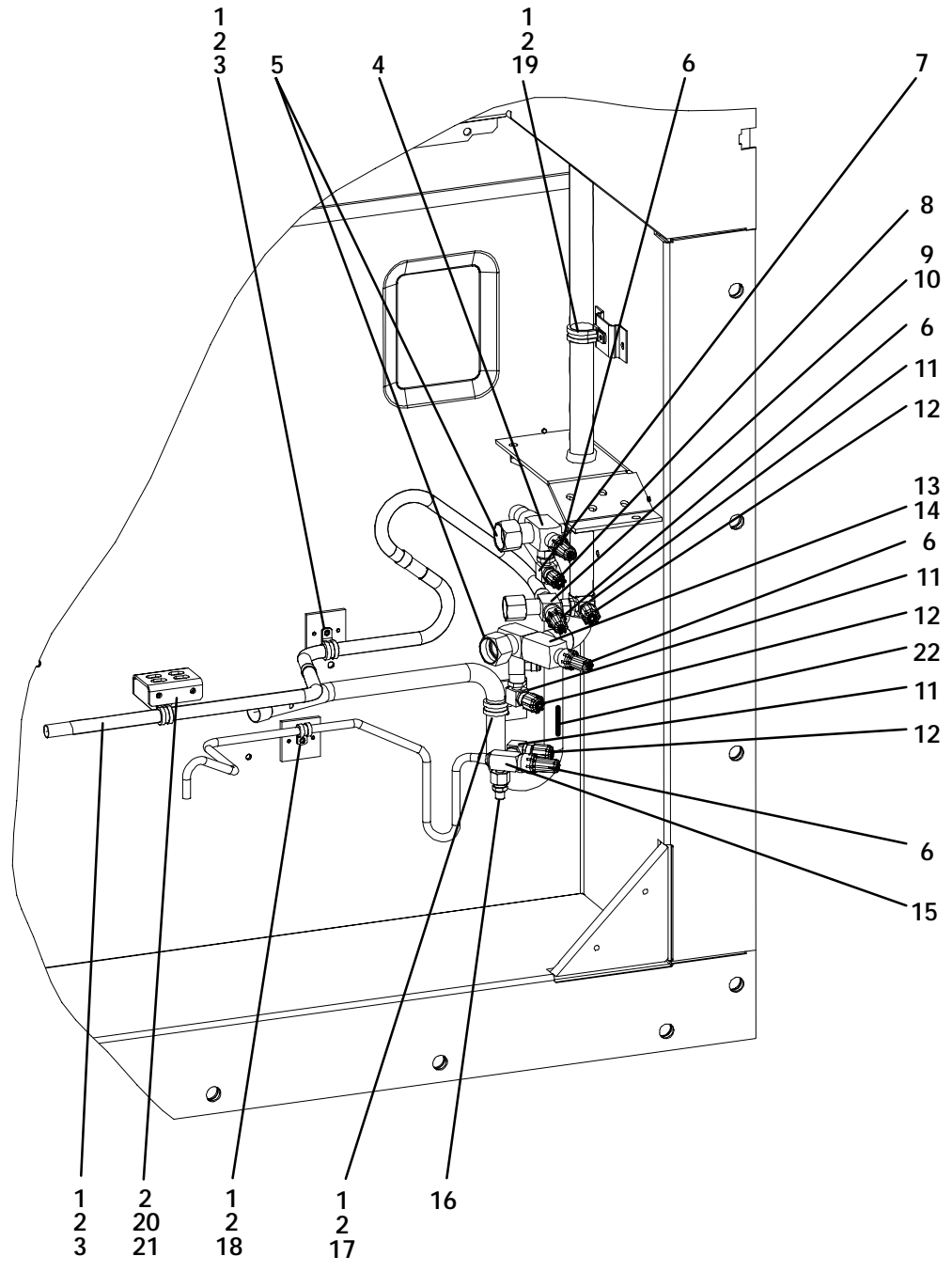
2.7 CONDENSER FAN MOTOR , CONDENSER COIL SECTION AND DRAIN KIT



Item	Part Number	Description	Qty
1	66U1-5361-25	Capscrew, Hex Head, 1/4-20 x 3/4 lg. - SST	10
2	66U1-5321-7	Washer, Flat, 1/4 - SST	10
3	34-06053-00	Washer, Mylar, 3/4 OD x 1/4 ID	10
4	34-06053-03	Washer, Mylar, 1.0 OD x 1/4 ID	2
5	68-14085-00	Bracket, Condenser Motor Mount	1
6	54-00549-00	Motor, Condenser Fan - Includes:	1
7	PL	Key, 3/16 Square x 1-3/8 lg. - SST	1
8	04-50027-00	Bearing	2
9	22-50088-02	Capacitor, 15 uF	1
10	66U1-5361	Screw, Hex Head, 5/16-18 x 1-1/4 lg. - SST	4
11	34-01181-01	Washer, Flat, 5/16 - SST	8
12	34-06053-02	Washer, Mylar, 1.0 OD x 3/8 ID	4
13	34-00667-12	Locknut, 5/16-18 - SST	4
14	69NT35-6112	Protector, Condenser Fan Motor Mounting	2
15	38-00503-00	Fan, Condenser (17-1/2 diameter) - Composite - Includes:	1
16	PL	Set Screw, Square Head, 5/16-24 x 5/8 lg. - SST	2

2.7 CONDENSER FAN MOTOR AND CONDENSER COIL SECTION (Continued)			
Item	Part Number	Description	Qty
OPTION 4 -FOUR ROW (7MM) CONDENSER COIL			
17	68-13432-02	Cover, Condenser Coil, Blue Includes:	1
	68-13432-03	Cover, Condenser Coil, White Includes:	1
18	58-04481-00	Plug (for use with coated handle or units with no center handle)	2
19	81-01855-00SV	Coil, Condenser(Copper) - 7MM 4 Row - Includes Mylar Washers	1
20	69NT35-8693-8	Protector (Apply between frame and coil & coil cover)	4
21	69NT35-8693-9	Protector (Apply between frame and coil & coil cover)	2
22	58-04026-41	Protector, Mylar (Apply between coil & coil cover, RH & LH sides)	2
OPTION H - HINGED CONDENSER FAN GRILLE			
23	76-00704-01	Grille and Venturi Assembly - Includes:	1
24	66U1-8912	Label, Rotation	1
25	76-50075-00	Hinge Kit - Includes:	1
26	44-00374-00	Hinge	2
27	58-04101-07	Protector, Mylar	4
28	34-06179-00	Screw, Hex Head, #10-24 x 7/16 lg. - SST	8
29	66U1-6811-8	Screw, Retaining - SST	2
	66U1-6811-12	Screw, Retaining (Phillips Head) - SST	2
30	34-06169-00	Washer, Retaining - SST	2
31	34-06053-03	Washer, Mylar, 1/4ID x 1.00OD	2
32	69NT35-2692-1	Washer, Fender 1/4 - SST	2
OPTION B - BOLTED CONDENSER FAN GRILLE			
23	76-00704-01	Grille and Venturi Assembly - Includes:	1
24	66U1-8912	Label, Rotation	1
33	69NT35-2692-1	Washer, Fender 1/4 - SST	4
34	34-06053-03	Washer, Mylar, 1/4ID x 1.00OD	4
35	34-00663-11	Washer, Lock, 1/4 - SST	4
36	66U1-5361-25	Capscrew, Hex Head, 1/4-20 x 3/4 lg. - SST	4
DRAIN KIT			
37	77-00990-00	Drain Kit Includes:	1
38	58-04539-06	Flex Tube	1
39	66U1-3882	Wire Tie	4
40	66U1-3882-3	Wire Tie	4

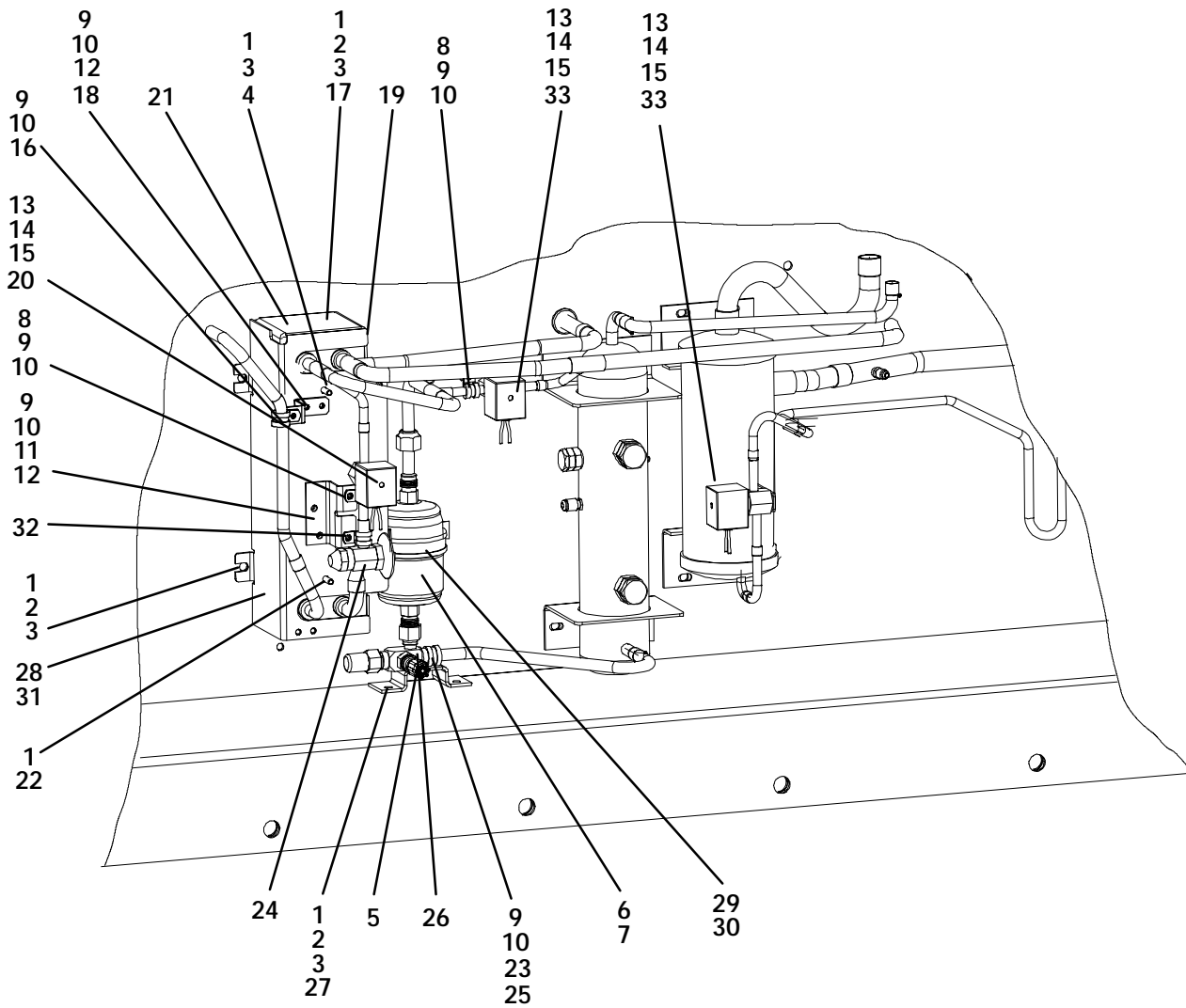
2.8 COMPRESSOR TUBING SECTION



2.8 COMPRESSOR TUBING SECTION

Item	Part Number	Description	Qty
1	66U1-5371-7	Screw, Hex Head, #10-24 x .50 lg. - SST	5
2	34-06053-05	Washer, Mylar, .25 I.D. x .80 O.D.	6
3	34-00373-07	Clamp, Cushion, .62 Dia.	2
4	40-00583-00	Valve, Service 7/8 I.D.	1
5	42-00384-02	Seal 1 1/4-12 (See Section 4)	2
6	40-50025-00	Cap, Service Valve	4
7	40-00542-01	Elbow, Adapter, High Pressure, R134a - Brass	1
8	40-00520-03	Cap, M10 x 1.0 - Nylon	1
9	40-00583-01	Valve, Service 5/8 I.D.	1
10	42-00384-01	Seal 1-14 (See Section 4)	1
11	40-00542-00	Elbow, Adapter, Low Pressure, R134a - Brass	3
12	40-00520-02	Cap, M8 x 1.0 - Nylon	3
13	40-00622-00	Valve, Service 1 1/8 I.D. Includes:	1
14	14-00176-04	Strainer	1
15	40-00585-00	Valve, Service 3/8 I.D.	1
16	40-00586-00	Coupling, Oil Return	1
17	66U1-3632-20	Clamp, Cushion, .88 Dia.	1
18	34-00373-53	Clamp, Cushion, .38 Dia.	1
19	44-00370-08	Clamp, Cushion, 1.125 Dia.	1
20	68-14142-00	Bracket	1
21	66U1-5321-8	Washer, #10 - SST	1
REFRIGERATION TEMPERATURE SENSORS			
22	12-00493-05	Sensor, Thermistor (CPDS)	1
-	-	Sensor, Thermistor (CPSS) See Section 2.16	1

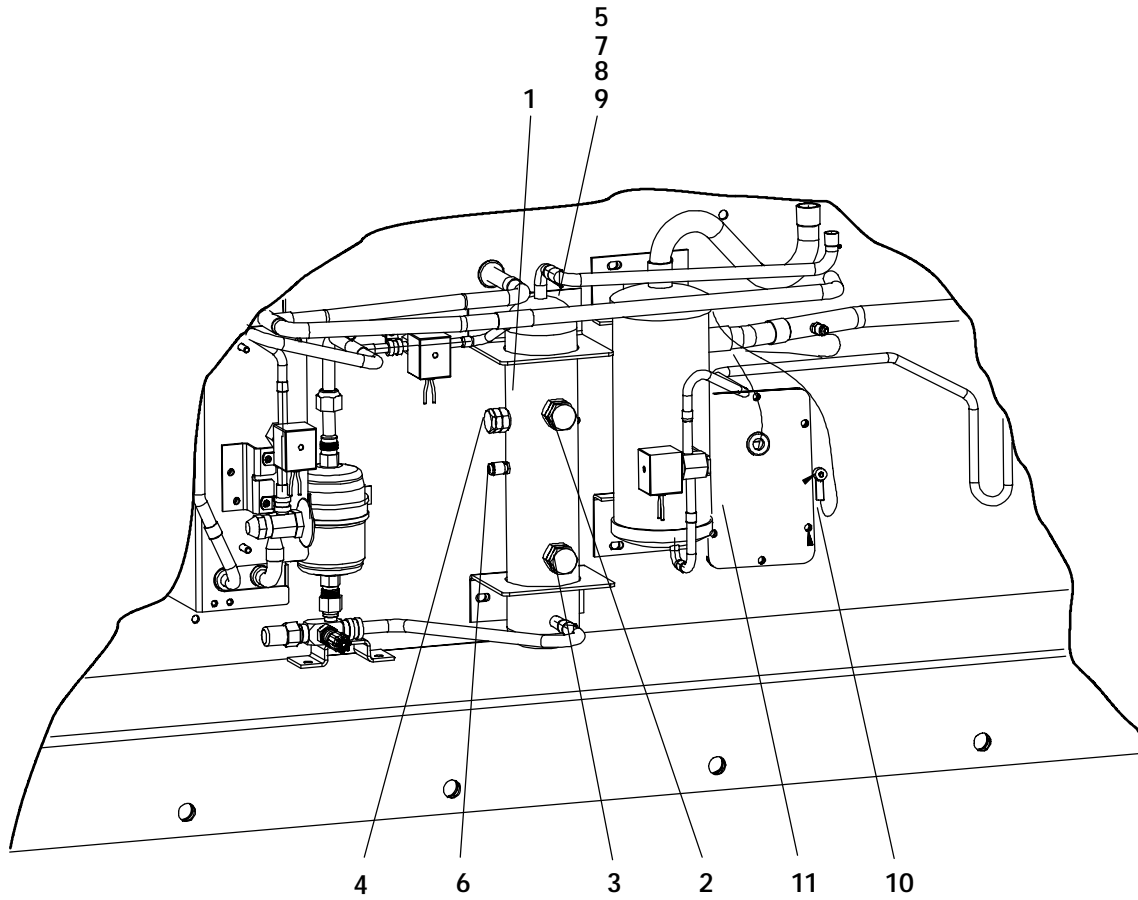
**2.9 ECONOMIZER, ECONOMIZER EXPANSION VALVE, ECONOMIZER SOLENOID VALVE,
LIQUID INJECTION VALVE AND FILTER DRIER SECTION**



2.9 ECONOMIZER, ECONOMIZER EXPANSION VALVE, ECONOMIZER SOLENOID VALVE AND FILTER DRIER SECTION

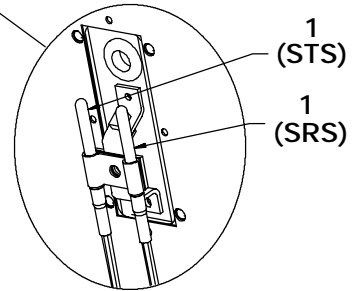
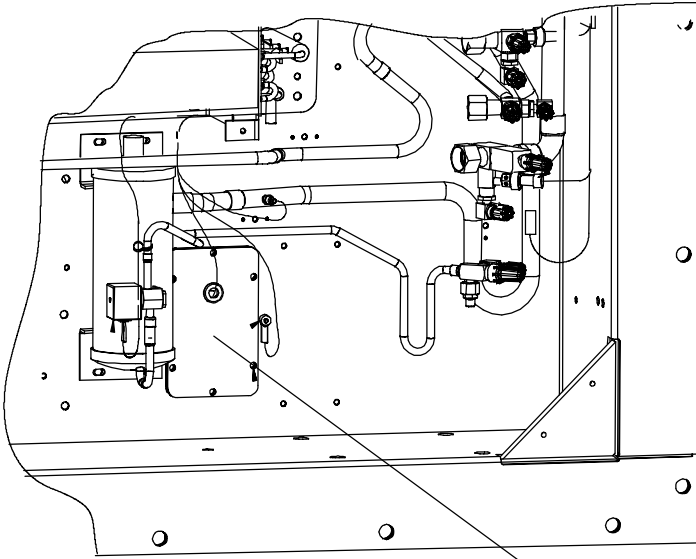
Item	Part Number	Description	Qty
1	34-06053-00	Washer, Mylar, 0.250 ID x 0.800 OD	12
2	66U1-5361-25	Screw, Hex Head, 1/4-20 x .75 lg. - SST	9
3	66U1-5321-7	Washer, Flat, 1/4 - SST	10
4	34-00667-11	Nut, Self-Lock	2
5	40-00520-01	Coupling with Cap	1
6	14-00311-00	Filter-Drier - Includes:	1
7	14-00284-20	O-Ring	2
8	34-00373-54	Clamp, Cushion, .38 Diameter	2
9	34-06053-05	Washer, Mylar, .205 I.D. x .60 O.D.	10
10	66U1-5371-7	Screw, Machine, Hex Head, #10-24 x .50 lg. - SST	9
11	68-14278-00	Bracket	1
12	66U1-5321-8	Washer, Plain #10 - SST	4
13	66U2-1132-2	Connector	4
14	66U1-3803	Heat Shrink	4
15	14-01091-01	Coil, Solenoid Valve (Liquid Injection and Economizer)	2
16	34-00370-03	Clamp, Cushion, .50 Diameter	1
17	68-14268-00	Bracket	1
18	68-14413-00	Bracket	1
19	42-00389-00	Insulation, Economizer	1
20	14-01090-12	Solenoid Valve Body	1
21	81-01539-12	Economizer	1
22	69NT41-782	Bushing	2
23	69NT35-2692-4	Washer, Fender #10 - SST	1
24	14-00232-08	Expansion Valve	1
25	34-00373-07	Clamp, Cushion, .62 Diameter	1
26	14-00222-01	Valve, King	1
27	68-14450-00	Bracket	1
28	42-00390-00	Insulation, Economizer	1
29	69NP20-1031	Clamp, Filter-Drier - Includes:	1
30	58-50014-00	Gasket (16 ft., Cut to length)	1
31	68-14269-00	Cover	1
32	34-00373-54	Clamp, Cushion, .44 Diameter	1
33	14-00285-00	Valve, Liquid Injection Solenoid	1

2.10 RECEIVER SECTION



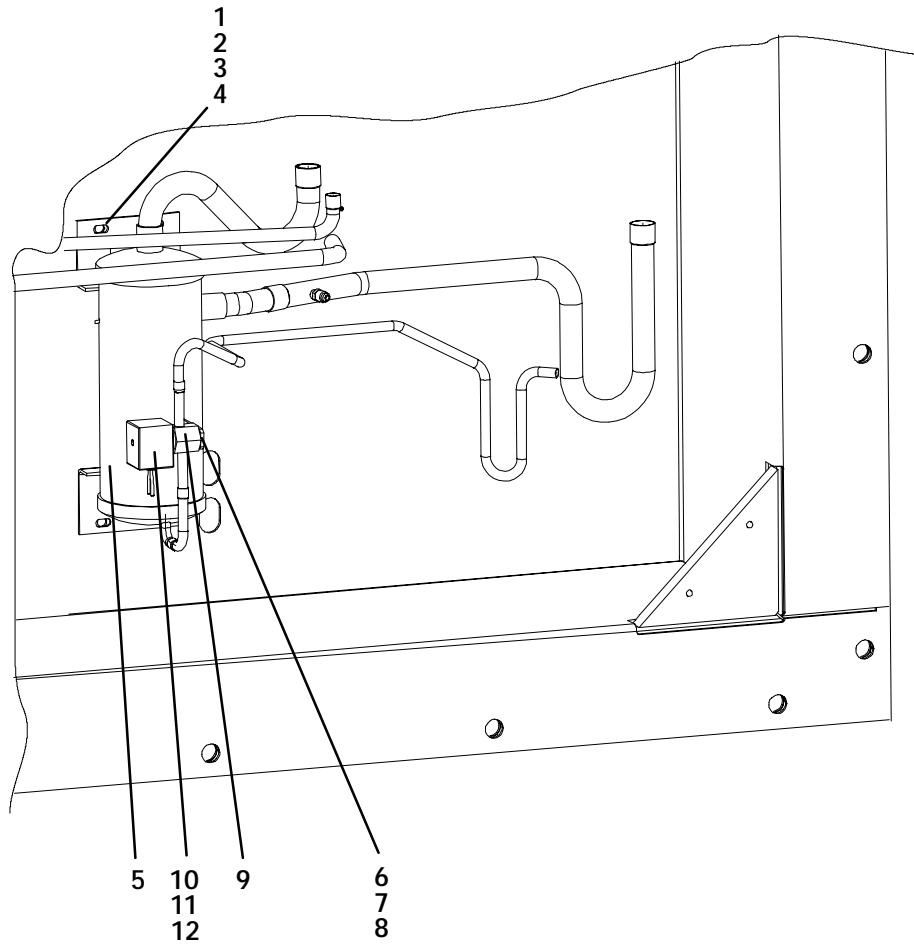
Item	Part Number	Description	Qty
1	79-01785-00	Receiver Assembly - Includes:	1
2	14-00220-04	Glass, Sight	1
3	14-00221-03	Indicator, Moisture-Liquid	1
4	14-01032-14	Plug, Fusible, 3/8 npt - Brass	1
5	58-04026-51	Protector, Mylar	1
6	EC39DM062	Valve, Schrader	1
7	66U1-5361-25	Screw, Hex Head, 1/4-20 x 3/4 lg. - SST	4
8	66U1-5321-7	Washer, Flat, 1/4 - SST	4
9	34-06053-00	Washer, Mylar	4
10	12-00495-20	Sensor, Ambient Thermistor (AMBS)	1
11	-	See Section 2.11 for Sensor Assembly and Related Parts	-

2.11 SRS AND STS SECTION



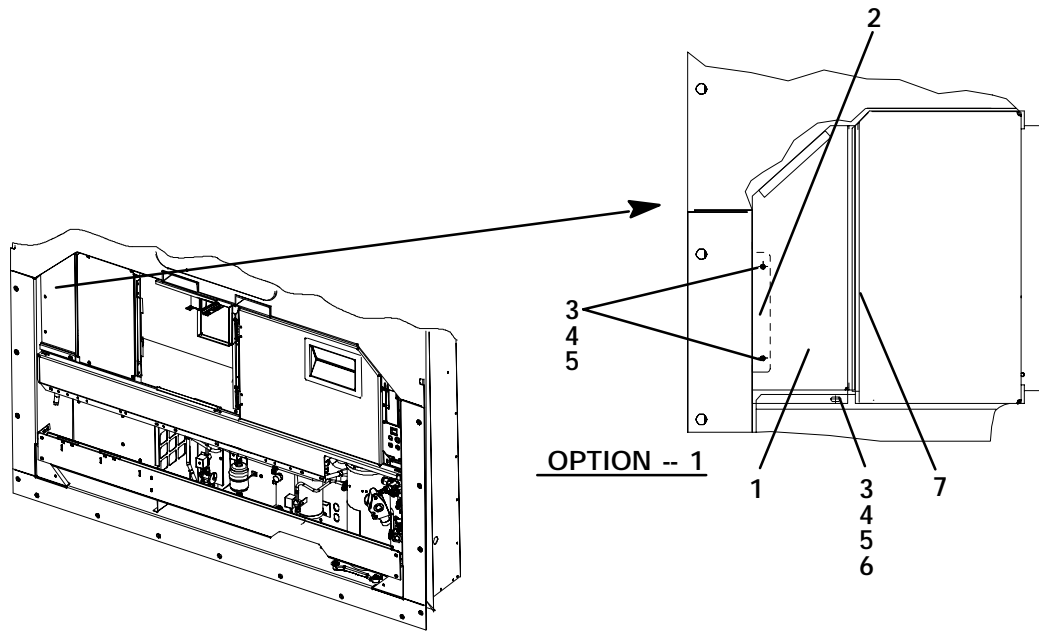
Item	Part Number	Description	Qty
1	12-00395-01SV	Sensor Assembly (STS or SRS)	2

2.12 OIL SEPARATOR SECTION



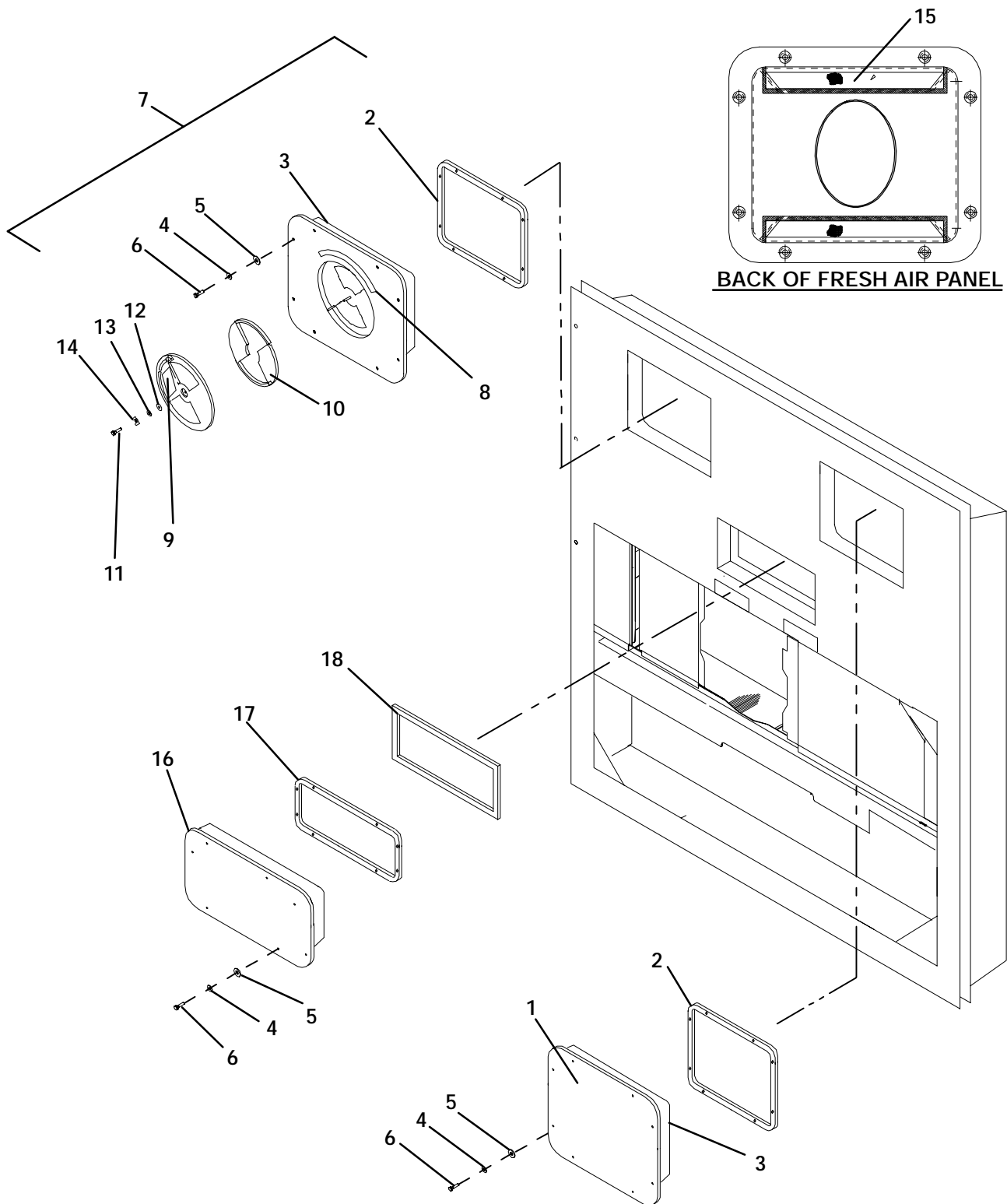
Item	Part Number	Description	Qty
1	34-06053-00	Washer, Mylar, 0.250 ID x 0.800 OD	4
2	66U1-5361-25	Screw, Hex Head, 1/4-20 x .75 lg. - SST	4
3	66U1-5321-7	Washer, Flat, 1/4 - SST	4
4	58-04026-34	Protector, Mylar	2
5	65-00184-20	Oil Separator	1
6	66U1-5371	Screw, Machine, Hex Head, #8-32 x .50 lg. - SST	2
7	66U1-5321-2	Washer, Plain #8 - SST	2
8	66U1-5331-4	Washer, Lock, #8 Spring - SST	2
9	14-00285-00	Solenoid Valve	1
10	66U2-1132-2	Connector	2
11	66U1-3803	Heat Shrink	2
12	14-01091-01	Coil, Solenoid Valve	1

2.13 LOWER FRESH AIR MAKE-UP



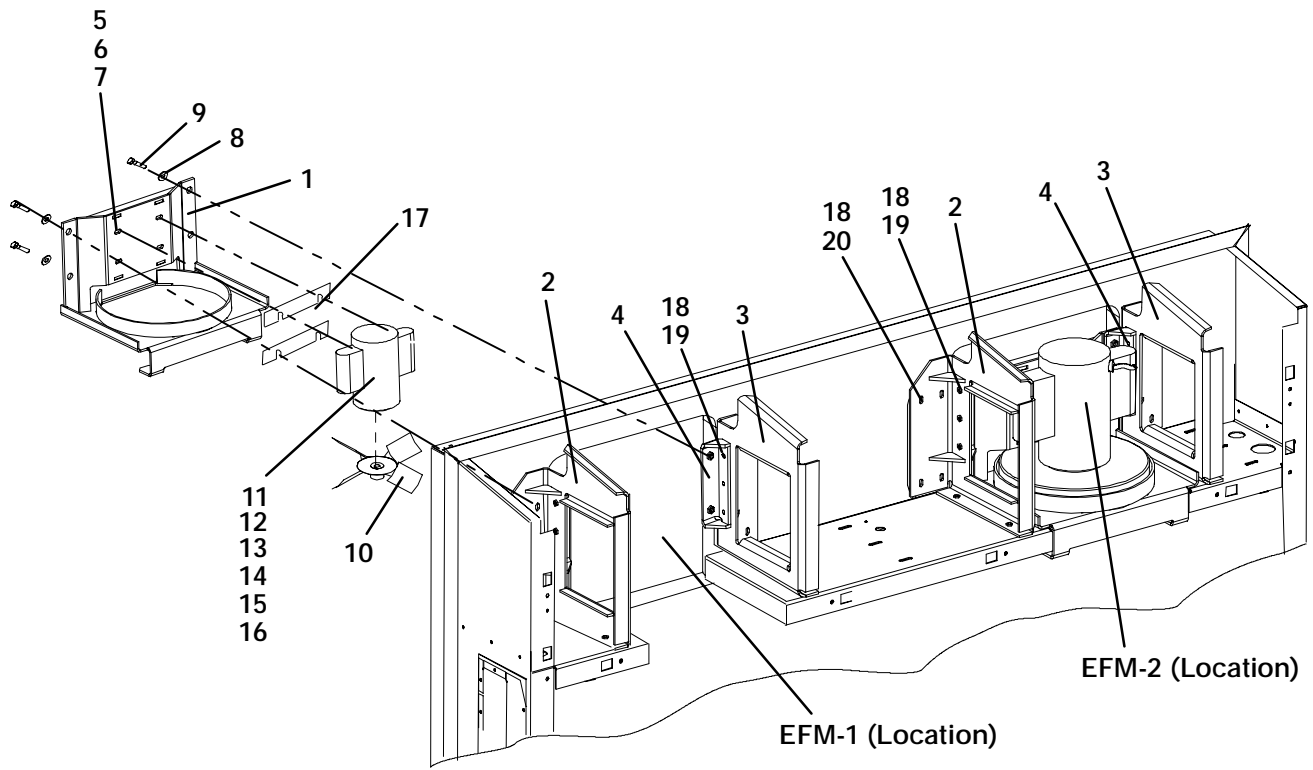
Item	Part Number	Description	Qty
OPTION 1 - LOWER FRESH AIR (NONE)			
1	69NT35-4047	Panel, Blank	1
2	69NT43-307	Bracket, Panel	1
3	66U1-5361-25	Screw, Hex Head, 1/4-20 x 3/4 lg. - SST	3
4	34-06053-18	Washer, Mylar, 1/4 ID x 1.00 OD	3
5	66U1-5321-3	Washer, Flat, 1/4, Type A- SST	3
6	69NT35-2692-1	Washer, Fender 1/4 - SST	1
7	42-00465-00	Gasket	1

2.14 UPPER FRESH AIR MAKE-UP AND ACCESS PANEL SECTION



2.14 UPPER FRESH AIR MAKE-UP AND ACCESS PANEL SECTION			
Item	Part Number	Description	Qty
OPTION 1 EVAPORATOR FAN ACCESS PANEL - PLAIN			
1	79-01697-13	Panel, Access - Includes:	A/R
2	42-00296-01	Gasket	1
3	42-00327-00	Gasket, - 0.26 x 0.50 Halfmoon	1
4	34-06212-12	Washer, Flat, 1/4 - SST	8
5	34-06053-13	Washer, Retaining .19 ID X .800 OD	8
6	34-06154-00	Screw, Hex Head, 1/4-20 x 1.00 lg. - TIR	8
OPTION 2 EVAPORATOR FAN ACCESS PANEL - WITH FRESH AIR MAKEUP			
7	79-01695-02	Panel, Fresh Air Make-up w/Retaining Washers - Includes:	A/R
2	42-00296-01	Gasket	1
3	42-00327-00	Gasket, - 0.26 x 0.50 Halfmoon	1
4	34-06212-12	Washer, Flat, 1/4 - SST	8
5	34-06053-13	Washer, Retaining .19 ID X .800 OD	8
6	34-06154-00	Screw, Hex Head, 1/4-20 x 1.00 lg. - TIR	8
8	-	Label, Fresh Air (See Section 2.23 for Language Selection)	1
9	62-02783-00	Label, Fresh Air	1
10	42-00407-01	Gasket (One Piece)	1
11	34-06185-01	Screw, Machine Pan Head, #8-32 x 1/2 lg. - SST	1
12	34-06053-19	Washer, Mylar, 1.00 OD x 0.312 ID	1
13	66U1-5321-13	Washer, Flat, 5/16 - SST	1
14	66U1-5362-2	Nut, Wing, 5/16-18 - SST	1
OPTION 3 WITH FRESH AIR MAKEUP AND SCREENS - USE ALL OF OPTION 2 AND ITEM BELOW			
15	58-04251-00	Screen, Medfly	2
HEATER ACCESS PANEL			
16	79-01697-12	Panel, Access - Includes:	1
17	42-00296-00	Gasket	1
18	42-01052-02	Gasket, Access Panel	1
4	34-06212-12	Washer, Flat, 1/4 - SST	8
5	34-06053-13	Washer, Retaining .19 ID X .800 OD	8
6	34-06154-00	Screw, Hex Head, 1/4-20 x 1.00 lg. - TIR	8

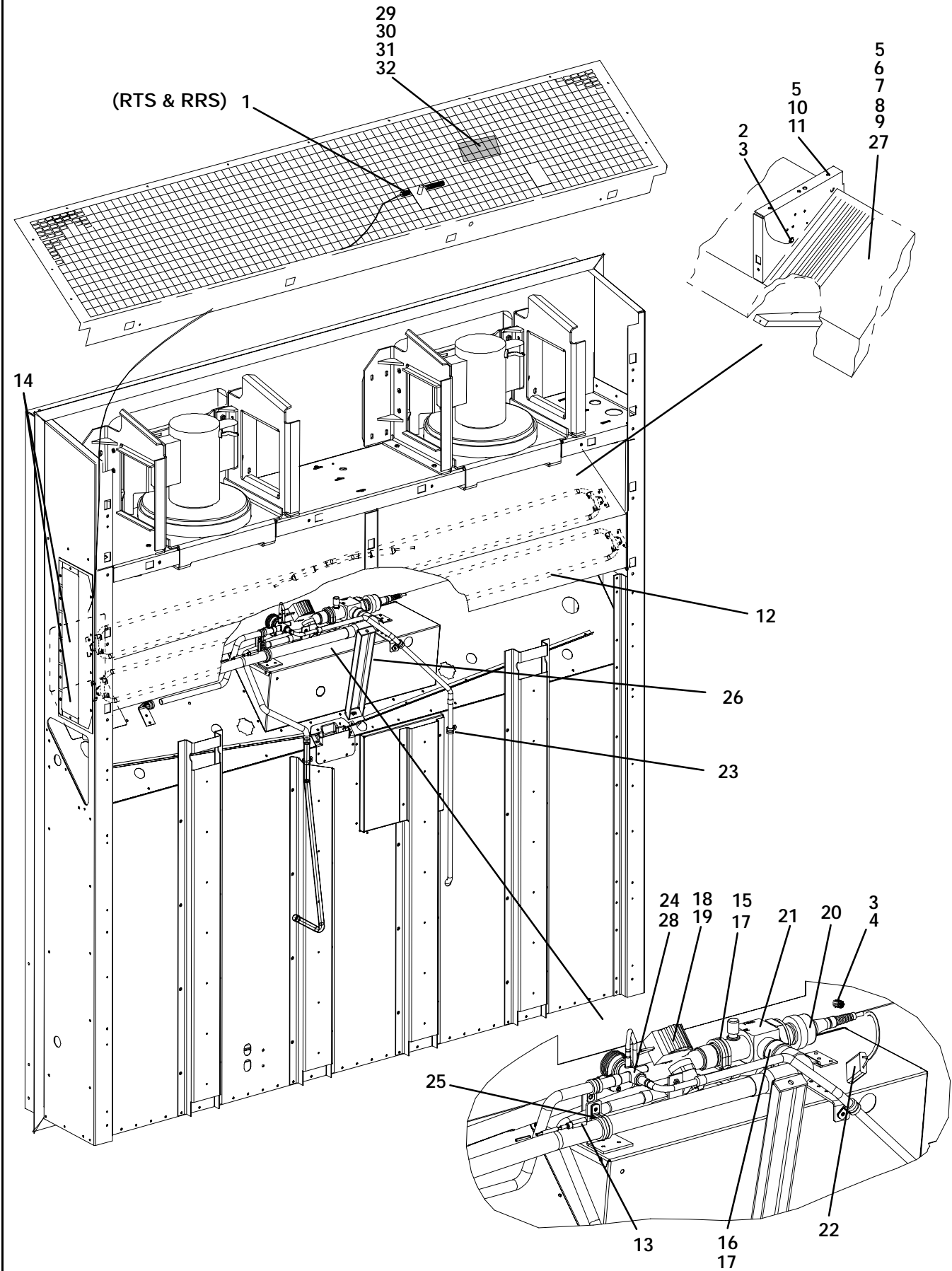
2.15 EVAPORATOR FAN ASSEMBLY



2.15 EVAPORATOR FAN ASSEMBLY

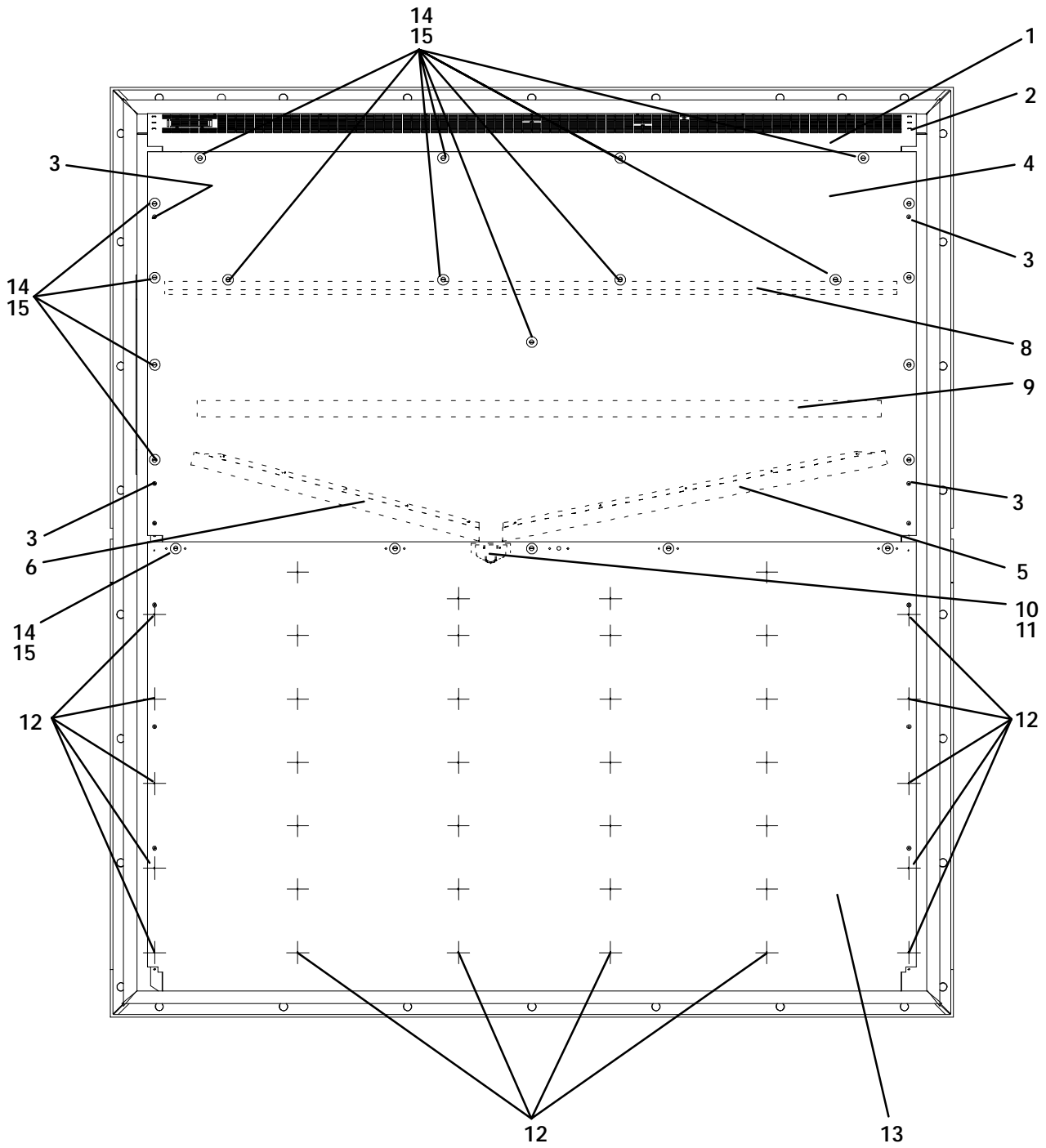
Item	Part Number	Description	Qty
1	86-04466-00	Motor Mount Assembly, Evaporator Fan Assembly	2
2	86-04481-00	Bracket, Right	2
3	86-04482-00	Bracket, Left	2
4	86-04478-00	Bracket, Angle	4
5	34-01181-01	Washer, Flat, 5/16 - SST	16
6	34-00792-10	Capscrew, Hex Head, 5/16-18 x 1-1/4 lg - SST	8
7	34-00667-12	Locknut, 5/16-18 - SST	8
8	66U1-5321-5	Washer, Flat, 3/8 - SST	8
9	66U1-5361-7	Bolt, Hex Head, 3/8-16 x 1.00 lg - SST	8
10	66CH1-1082-19	Fan, Evaporator	2
11	54-00578-00	Motor, Evaporator Fan - Includes:	2
12	04-50027-00	Bearing, Front (Shaft End)	1
13	04-50027-01	Bearing, Rear (Opposite Shaft End)	1
14	22-50088-01	Capacitor (15 μ F) Low Speed	1
15	22-50088-00	Capacitor (20 μ F) High Speed	1
16	22-01613-34	Pin #16	1
NS	22-01892-00	Plug Assembly, Motor (Located on Wire Harness) - Includes:	1
NS	22-01614-03	Plug	1
NS	22-01613-15	Contacts	A/R
NS	22-01892-01	Receptacle Assembly, Motor - Includes:	1
NS	22-01614-02	Receptacle	1
NS	22-01614-05	Strain Relief	1
NS	22-01613-14	Contacts	A/R
17	69NT35-1662	Shim, .063 Thk. (If Required)	2
	69NT35-1662-1	Shim, .090 Thk. (If Required)	2
18	66U1-5321-3	Washer, Flat, 1/4 - SST	28
19	66U1-5361-25	Screw, Hex Head, 1/4-20 X .75 lg - SST	12
20	34-00655-10	Screw, Hex Head 1/4-20 X 1.25 lg - SST	16

2.16 EVAPORATOR COIL SECTION - REAR PANELS REMOVED



2.16 EVAPORATOR COIL SECTION - REAR PANELS REMOVED			
Item	Part Number	Description	Qty
1	12-00500-01SV	Sensor Assembly (RRS & RTS)	1
2	12-00495-20	Sensor, Thermistor, Defrost (DTS)	1
3	34-01178-22	Screw, Hex Head, #8-32 x 1/2 lg. - SST	3
4	66U1-6912-16	Thermostat, Heat Termination (HTT)	1
5	AU11JR171	Washer, Lock, 1/4 - SST	10
6	68-14107-00	Retainer (For Heaters)	1
7	69NT35-6532	Clip (For Heaters)	4
8	69NT35-2692-1	Washer, Flat, 1/4 - SST	2
9	66U1-5371-13	Screw, Hex Head, #10-24 x 1.25 lg. - SST	2
10	66U1-5361-25	Capscrew, Hex Head, 1/4-20 x 3/4 lg. - SST	9
11	66U1-5321-3	Washer, Flat, 1/4 - SST	A/R
12	24-00006-02	Heater, Evaporator Coil	4
13	12-00493-06	Sensor, Thermistor, (CPSS)	1
14	58-04026-26	Protector, Mylar	2
15	34-00373-69	Clamp, Tube 1 3/8 - SST	1
16	KA66FA138	Clamp, Tube 1 3/8 2 Holes	1
17	66U1-5371-7	Screw, Machine, Hex Head, #10-24 x .50 lg. - SST	3
18	14-01090-11	Solenoid Valve, Unloader	1
19	14-01091-02	Coil, Unloader Solenoid Valve	1
20	14-00263-05	Valve, Stepper Motor - Includes:	1
21	14-00263-20	Piston and Motor Assembly - Includes:	1
22	22-02392-03	Connector (To Expansion Controller Module)	1
NS	22-02393-01	Pin, 18-20 Gauge (Used on 22-02392-03)	4
NS	22-02394-03	Seal (Used on 22-02392-03)	4
23	44-00370-03	Clamp	1
24	44-00370-04	Clamp	1
25	44-00370-08	Clamp	1
26	86-04498-00	Coil Bracket	1
OPTION 4 HELICOX HATCHED			
27	81-01682-00	Coil, Evaporator (Does not include thermostats or heaters)	1
28	14-00273-02	Valve, Thermostatic Expansion, Hermetic	1
DEHUMIDIFICATION			
-	76-00675-01	Kit, Humidity Sensor(Field installation, units provisioned for - See Unit Matrix, T-300) - Includes:	-
29	10-00318-00	Sensor, Humidity (HS)	1
30	66U1-5371-10	Screw, Hex Head, #10-24 x 1.00 lg. - SST	4
31	66U1-5321-8	Washer, Flat, #10 - SST	2
32	68-13181-00	Bracket Assembly, Humidity Sensor	1

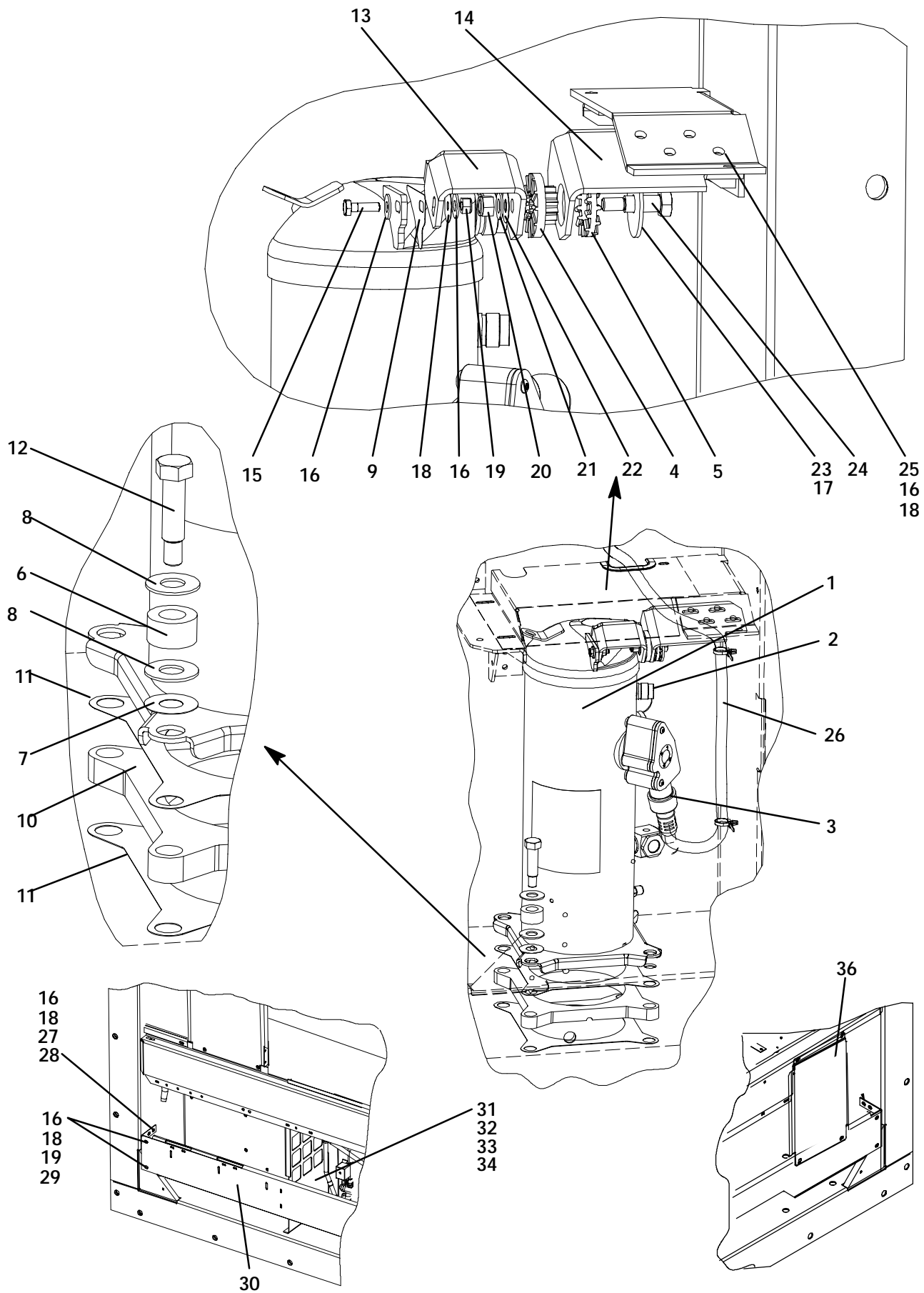
2.17 BACK PANEL ASSEMBLY - OPTION 1 - ALUMINUM BOLTED



2.17 BACK PANEL ASSEMBLY - OPTION 1 - ALUMINUM BOLTED

Item	Part Number	Description	Qty
1	68-14182-00	Grille, Top	1
2	34-00928-07	Rivet, Blind, 5/32 Diameter, Grip Range - 1/8-1/4	13
3	66U1-7982-2	Rivet, TIR, 3/16 Diameter, Grip Range - 5/64-11/64	4
-	69NT41-942-10	Panel Assembly, Upper - Includes:	1
4	68-14038-00	Panel, Upper NSS	1
5	68-14050-00	Drain Pan, Left NSS	1
6	68-14040-00	Drain Pan, Right NSS	1
7	34-00928-02	Rivet, Blind, 1/8 Diameter, Grip Range - 1/8-3/16	12
8	42-00174-34	Gasket	1
9	42-00334-00	Gasket	1
10	58-04533-00	Drain NSS	1
11	68-14148-00	Plate NSS	1
12	34-00928-02	Rivet, Blind, 1/8 Diameter, Grip Range - 1/8-3/16	40
13	68-14046-00	Panel, Bottom (Painted)	1
14	66U1-2403	Screw, Machine, Truss Head, #10-24 x 1/2 lg. - SST	22
15	69NT35-2692	Washer, Fender, #10 x 1.00 OD - SST	22

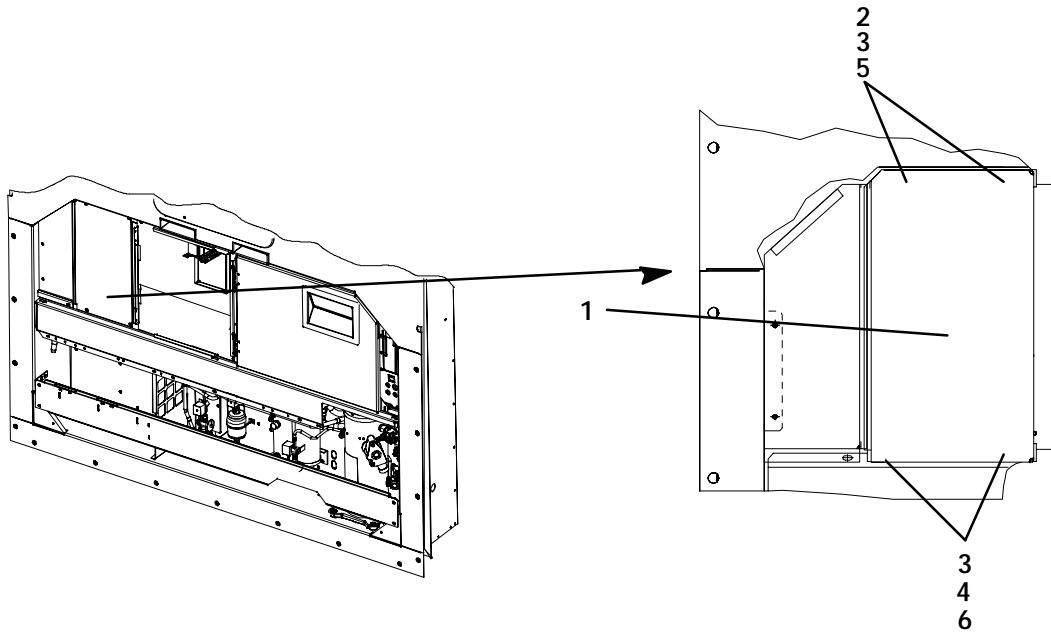
2.18 COMPRESSOR MOUNTING COMPONENTS AND GUARD



2.18 COMPRESSOR MOUNTING COMPONENTS AND GUARD

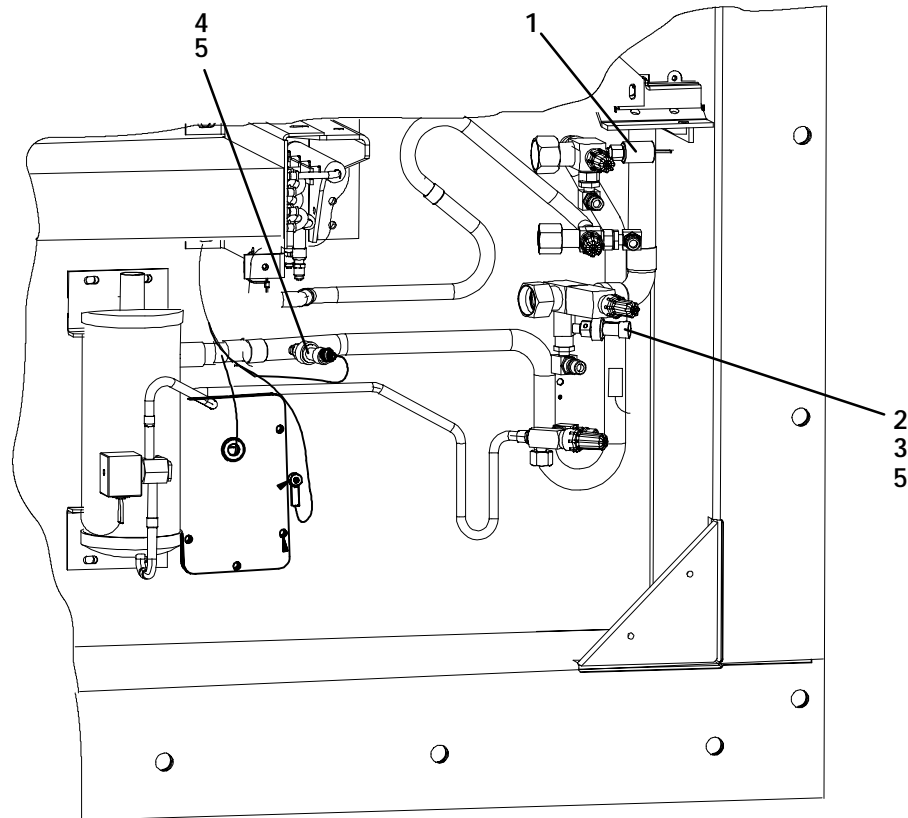
Item	Part Number	Description	Qty
1	18-00095-20SV	Compressor, Scroll - Includes: (See Section 4)	-
2	42-00384-01	Seal, Rotolock, 1-14	1
NS	42-00384-02	Seal, Rotolock, 1-1/4-12	2
NS	07-00427-00	Compressor Oil	2
3	18-00077-41	O-Ring	1
4	58-04461-00	Shockmount, Bushing	1
5	58-04461-01	Shockmount, Ring	1
6	58-04451-00	Mount, Resilient, 80A	4
7	34-06053-20	Washer, Mylar - 1.50 X .65	4
8	34-06236-00	Washer, .687 X 1.50 X .078 - SST	8
9	58-04463-00	Mylar Protector	1
NS	44-01043-07	Wire Tie	2
NS	40-00630-00	Schrader Valve	1
10	48-00350-01SV	Base, Compressor (Painted) - Includes:	1
11	58-04435-00	Protector, Mylar	2
12	34-06174-03	Bolt, Shoulder, 1/2-13 UNC - SST	4
13	86-04405-00	Bracket Assembly	1
14	86-04406-00	Bracket Assembly	1
15	66U1-5361-47	Bolt, Machine Hex Head, 1/4-20 X 1.25 lg. - SST	1
16	66U1-5321-7	Washer, Plain 1/4 - SST	15
17	58-04026-62	Protector, Mylar	1
18	34-06053-00	Washer, Mylar .250 ID X .800 OD	14
19	34-00667-11	Nut, Self Lock 1/4-20 - SST	4
20	34-00667-13	Nut, Self Lock 3/8-16 - SST	1
21	66U1-5321-5	Washer, Plain 3/8 N Type A - SST	1
22	34-06053-02	Washer, Mylar .375 ID X 1.00 OD	1
23	34-06060-03	Washer, Snubbing .537 ID X 2.00 OD	1
24	34-06174-04	Bolt, Shoulder, 3/8-16 UNC - SST	1
25	34-00655-04	Screw, Cap Hex Head 1/4-20 x .50 - SST	4
26	22-01914-02	Cable, Power	1
27	68-14143-00	Bracket, Guard Support	2
28	66U1-5361-25	Capscrew, Hex Head, 1/4-20 x 3/4 lg. - SST	4
29	66U1-5361-11	Capscrew, Hex Head, 1/4-20 x 1-1/2 lg. - SST	4
30	68-14138-00	Guard, Compressor	1
31	66U1-5321-8	Washer, Flat, #10 - SST	7
32	34-06053-05	Washer, Mylar, 0.205 ID x 0.600 OD	7
33	66U1-5371-7	Screw, Slotted Head, #10-24 x .50 lg. - SST	5
34	68-14139-00	Partition	1
35	40-00630-00	Service Valve	1
36	68-14449-00	Compressor cover	1

2.19 OPTION 9 - NO TEMPERATURE RECORDER



Item	Part Number	Description	Qty
1	68-12658-01	Panel	1
2	66U1-5321-7	Washer, Flat, 1/4 - SST	2
3	66U1-5361-25	Screw, Cap Hex Head, 1/4-20 x .75 lg. - SST	4
4	69NT35-2692-1	Washer, Fender, 1/4 I.D. x .993-1.015 O.D.	2
5	34-06053-13	Washer, Retaining, .195 I.D. x .80 O.D. - Mylar	2
6	34-06053-03	Washer, .25 I.D. x 1.00 O.D. - Mylar	2

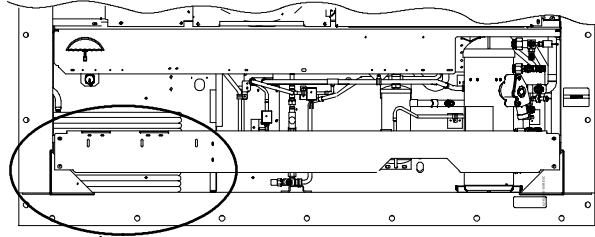
2.20 TEMPERATURE READOUT



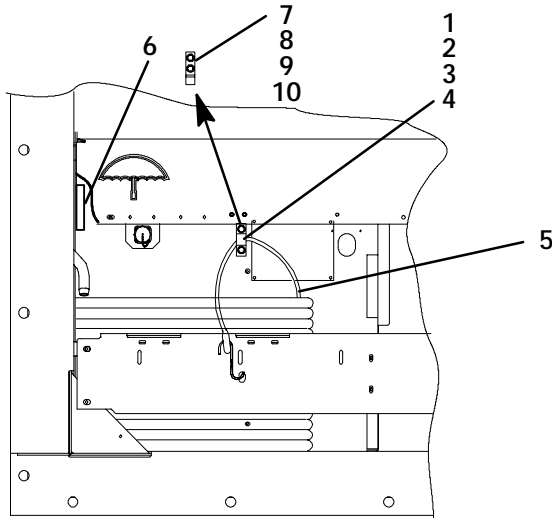
Option T - Transducer Locations

Item	Part Number	Description	Qty
OPTION T - PRESSURE TRANSDUCERS (Digital)			
1	12-00309-05	Switch, Pressure	1
-	12-00352-07SV	Transducer Kit - Includes:	1
2	12-00352-07	Transducer, Suction (SPT) NSS	1
3	22-01713-12	Cable, SPT Patch	1
4	12-00352-00	Transducer, Discharge (DPT)	1
5	EC39DM070	Core, Check Valve (Used with 40-00604-00 Tee)	3

2.21 CABLE RESTRAINT COMPONENTS



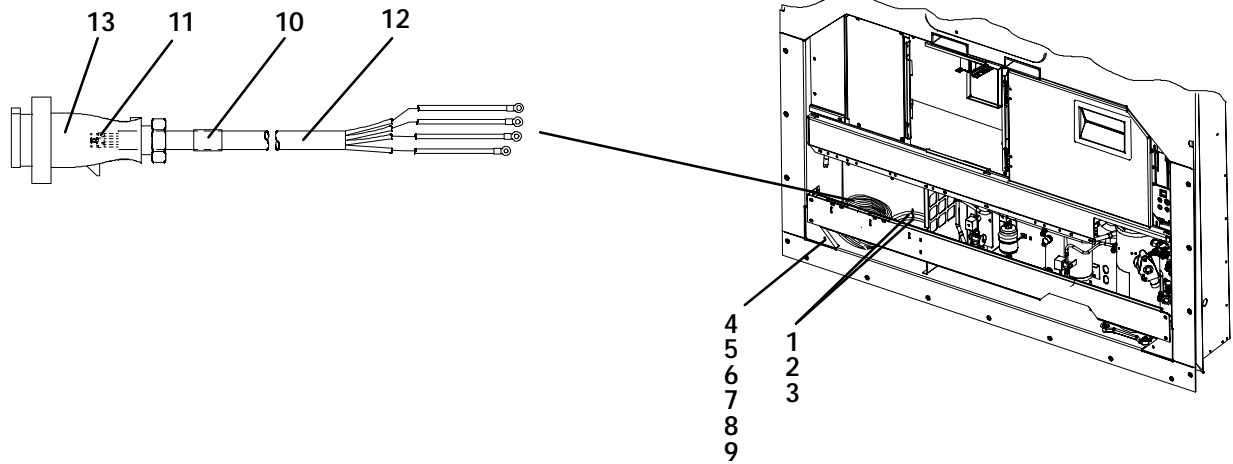
OPTION 3 -- J-HOOK



OPTION 2 - LEFT SIDE BUNGYCORD

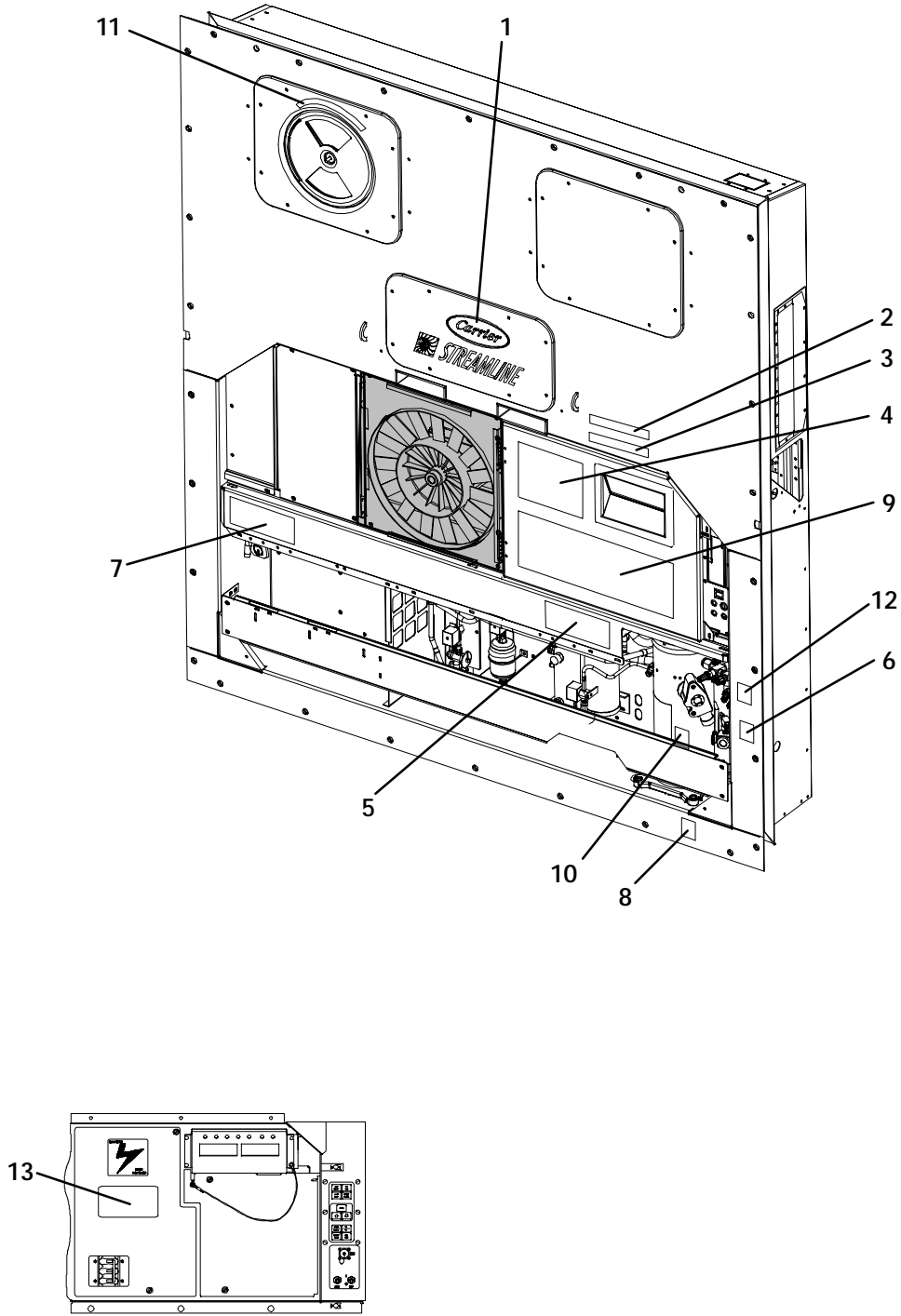
Item	Part Number	Description	Qty
OPTION 2 - LEFT BUNGY CORD ONLY			
1	69NT35-5992	Cable Restraint	1
2	66U1-5321-7	Washer, Flat, 1/4 - SST	2
3	66U1-5361-25	Screw, Cap, Hex, Head, 1/4-20 x .75 lg - SST	2
4	34-06053-03	Washer, Mylar, .25 I.D. X 1.00 O.D.	2
5	66U1-2603	Strap, Tie Down	1
6	22-01679-03	Dummy Receptical	1
OPTION 3 - J-HOOK			
7	69NT35-8382	Cable Restraint, J-Hook	1
8	58-04026-22	Protector, Mylar	1
9	66U1-5321-7	Washer, Flat, 1/4 - SST	2
10	66U1-5361-25	Screw, Cap, Hex, Head, 1/4-20 x .75 lg - SST	2

2.22 VOLTAGE CABLES



Item	Part Number	Description	Qty
CLAMPS ON BACK WALL AND CABLE CUTTERS			
1	34-00373-59	Clamp, Tube, Cushioned, 3/4 Diameter	A/R
2	66U1-5381-1	Screw, Hex Head, #10-24 x 3/4 lg. - SST	A/R
3	34-06053-03	Washer, Mylar, 1/4 ID x 1.00 OD	A/R
4	69NT35-6412-2	Clamp, Cable Cutter, 8 AWG cable	1
	69NT35-6412	Clamp, Cable Cutter, 10 AWG cable	1
	69NT35-6412-1	Clamp, Cable Cutter, 11 AWG cable	1
5	58-04026-07	Protector, Mylar	A/R
6	66U1-5361-11	Screw, Machined Hex Head, 1/4-20 x 1-1/2 lg. - SST	A/R
7	34-00667-11	Locknut, Hex Head, 1/4-20 - SST	A/R
8	66U1-5321-7	Washer, Flat, 1/4 - SST	A/R
9	34-06053-03	Washer, Mylar, 0.25 I.D. x 1.00 O. D.	A/R
STANDARD PARTS FOR ALL 460V CABLES			
10	66U1-2583	Heat Shrink Tube (Coil Label) - "460V"	1
11	22-02324-01	Bushing (Used with Standard Cable)	4
OPTION 1			
12	66U1-9782	Cable, Power - Yellow, 10/4	A/R
13	22-02378-00	Plug, Power	1

2.23 LABELS AND DECALS



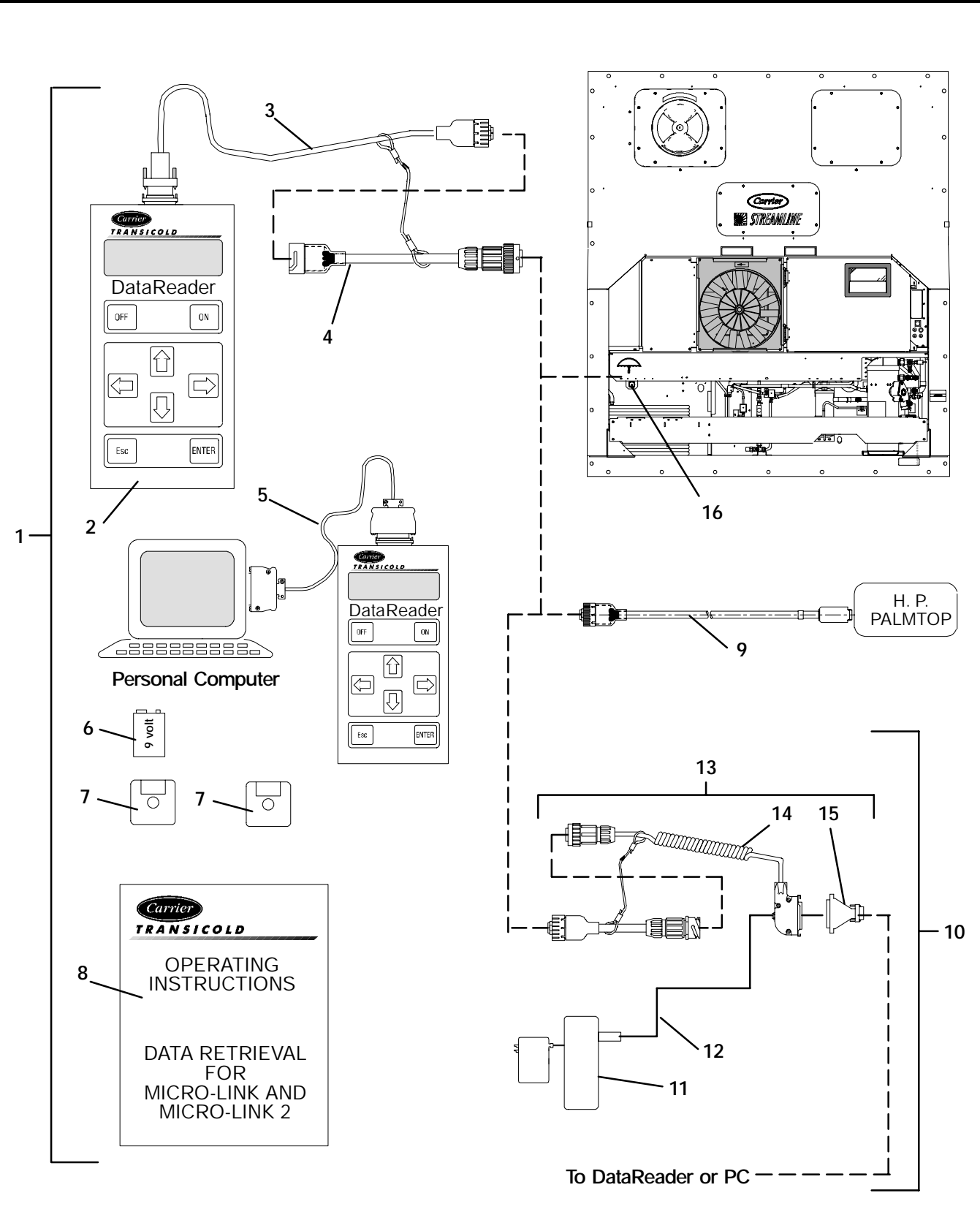
VIEW -- INSIDE CONTROL BOX

2.23 LABELS AND DECALS

Item	Part Number	Description	Qty
STANDARD LABELS			
1	62-10720-00	Decal, Carrier Streamline	1
2	69NT35-3867	Label, Economy Mode	1
3	69NT35-3907	Label, Humidity Control Sensor	1
4	62-02721-07	Label, Function Code - <i>English</i>	1
5	62-02562-01	Label, Micro-Link 2i	1
6	62-02444-01	Label, Charge with R-134a	1
7	62-10259-00	Label, R-134a - Ozone Protection - <i>English</i>	1
	62-02530-01	Label, R-134a - Ozone Protection, Umbrella Only - <i>English</i>	1
8	62-02458-01	Label, POE Compressor Oil	1
OPTION 1 - ENGLISH			
9	62-02743-16	Label, Operating Instructions - <i>English</i>	1
10	62-10717-00	Label, Warning Compressor Power-Up - <i>English</i>	1
11	62-02723-13	Label, Fresh Air Makeup - <i>English</i>	1
12	62-10716-00	Label, Compressor Removal - <i>English</i>	1
13	62-10532-00	Label, Welding Precautions - <i>English</i>	1

3 INTERROGATOR AND ACCESSORIES

3.1 DATA READER



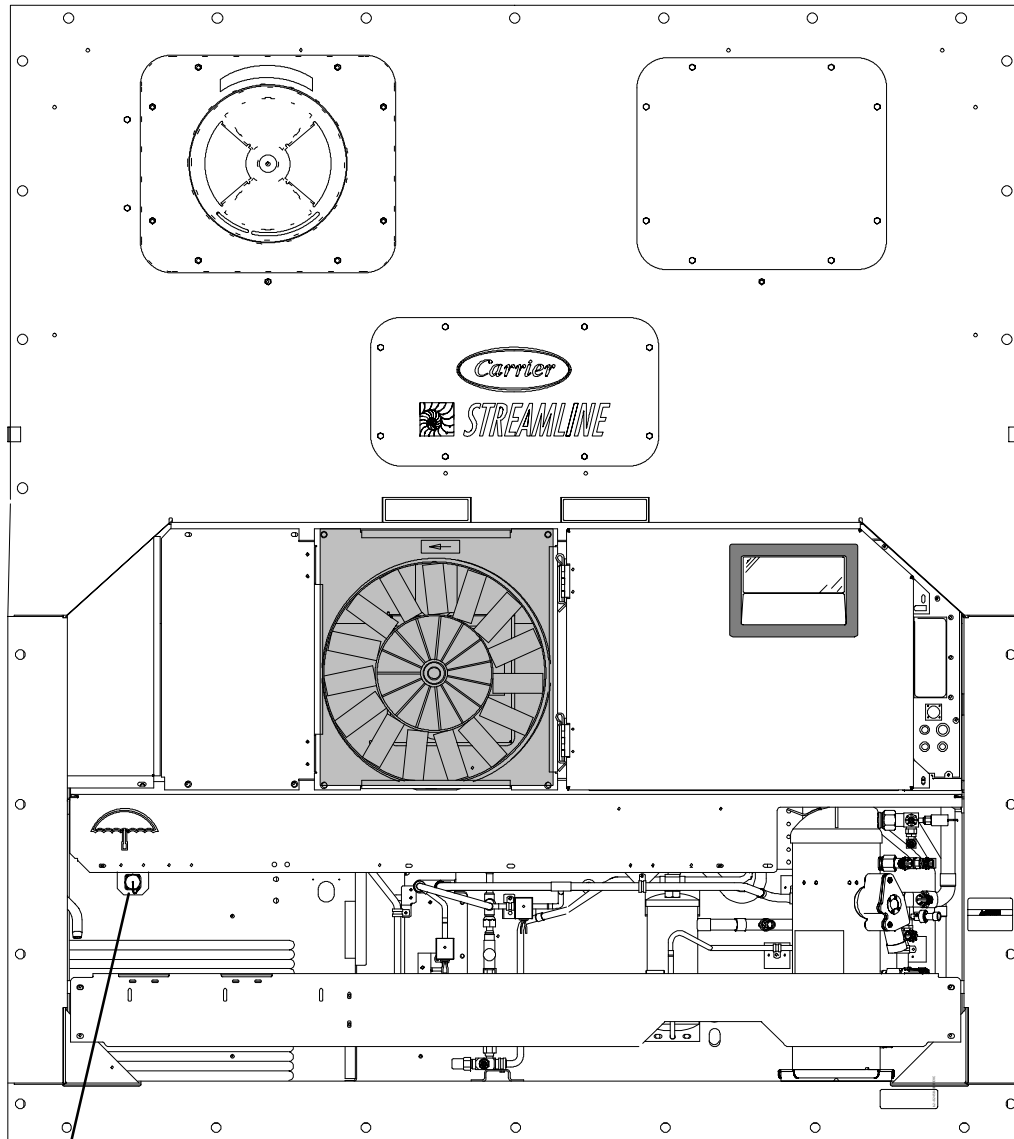
3.1 DATAREADER

Item	Part Number	Description	Qty
1	07-00321-07/2.4	Kit, DataReader - Includes:	1
2	12-00377-01	DataReader NSS	1
3	22-01737-00	Cable, Download	1
4	22-01737-01	Cable, Adapter	1
5	22-01743-00	Cable, Upload	1
6	PL	Battery, Akaline - 9 Volt	1
-	07-00406-00	Disk Kit, DataView (DOS) (3.5 DS/HD Diskettes, Formatted) (SEE NOTE) - Includes:	1
7	12-00413-05SV	Software, DataView NSS	1
7	12-00528-00	Software, DataView (Scroll) NSS	1
8	62-02575-07	Manual, Operating Instructions	1
9	22-01737-02	Cable, H. P. Palmtop	1
10	76-50058-00	Kit, Battery, with Cable - Includes:	1
11	NSS	Battery, External, with Battery Charger	1
12	22-02401-00	Cable	1
13	76-50059-00	Kit, Cable, with Adapter - Includes:	1
14	22-02418-02	Cable, Interrogator	1
15	22-02420-00	Adapter	1
16	-	Receptacle - Refer to section 3.2	-

NOTE

Kit includes a 3.5 DS/HD Diskette, Formatted. If a DS/DD Diskette is required, contact a Customer Service Representative.

3.2 INTERROGATOR RECEPTACLE

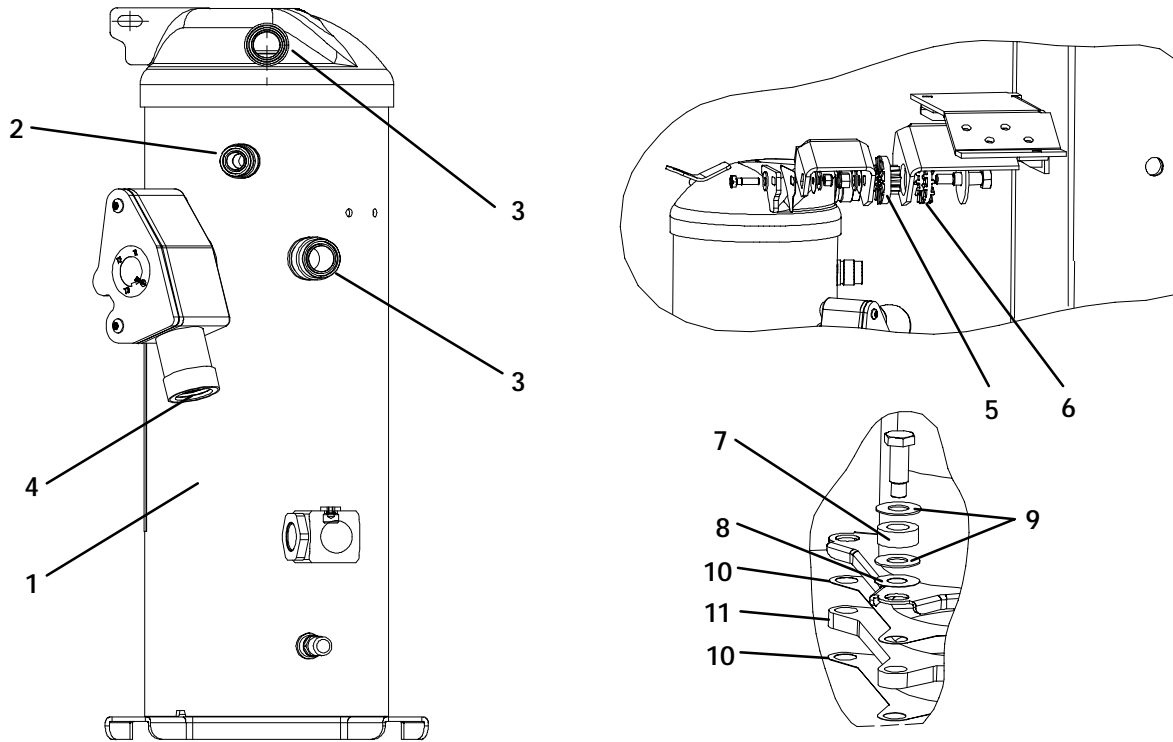


OPTION 1 & OPTION 5

- | | |
|--------|--------|
| 1 | 5 |
| 2 | 6 |
| 3 | 7 |
| NO TAG | NO TAG |
| 4 | 8 |

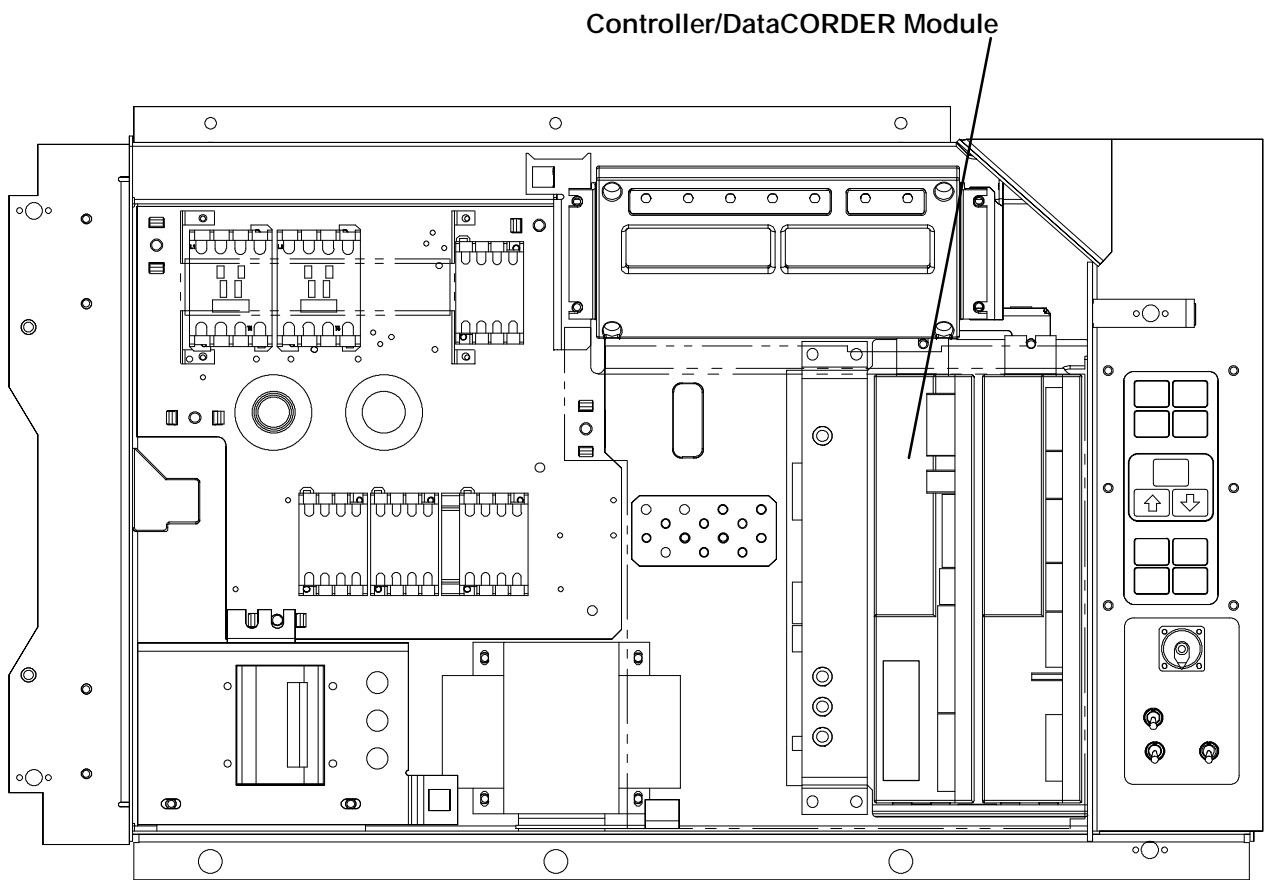
3.2 INTERROGATOR RECEPTACLE			
Item	Part Number	Description	Qty
OPTION 1 - LEFT STRAIGHT MOUNT			
1	22-01660-03	Receptacle, Interrogator (ICR) (5 Pin)	1
2	22-01613-14	Contact, Pin, #16	5
3	69NT43-176	Cap, Dust, with Tether (5 Pin)	1
4	69NT41-192	Bracket, Interrogator Connector	1
OPTION 5 - LEFT ANGLED MOUNT			
5	22-01660-03	Receptacle, Interrogator (ICR) (5 Pin)	1
6	22-01613-14	Contact, Pin, #16	5
7	69NT43-176	Cap, Dust, with Tether (5 Pin)	1
8	68-12553-00	Bracket, Interrogator Connector	1
NOTE			
Do not mix silver and gold pins and sockets.			

4 COMPRESSOR



Item	Part Number	Description	Qty
1	18-00095-20SV	Compressor, Scroll (See Section 2.18) - Includes:	1
2	42-00384-01	Seal, Rotolock, 1-14	1
3	42-00384-02	Seal, Rotolock, 1-1/4-12	2
4	18-00077-41	O-Ring	1
5	58-04461-00	Shockmount, Bushing	1
6	58-04461-01	Shockmount, Ring	1
7	58-04451-00	Mount, Resilient, 80A	4
8	34-06053-20	Washer, Mylar - 1.50 X .65	4
9	34-06236-00	Washer - .687 X 1.50 X .78	8
10	58-04435-00	Protector, Mylar	2
11	48-00350-01SV	Base, Compressor (Painted)	1
NS	07-00427-00	Oil	2

5 CONTROLLER/DATACORDER CONFIGURATION



Part Number	Description	Qty
12-55458-00	Controller - Un-Configured (See Note 1) (Contact Carrier Transicold service engineering for software)	1
See Note 2	Controller - Configured (Refer to Manual T-300, Container Unit Matrix)	1

NOTES

1. The last four digits of the Part Number is the operation software revision.
2. The Controller/DataCORDER module is shipped with the operational software already loaded, however, when ordering this part number the end user must load the configuration software at the time of installation.

6 TOOLS

PART NO.	DESCRIPTION
07-00013-00	Temperature Tester (Simpson Meter)
07-00013-01	Temperature Test Lead (15 Foot)
07-00013-02	Temperature Test Lead (50 Foot)
07-00013-03	Adapter, Males (Both Ends) (Use with Temperature Tester)
07-00015-00	Case, Carrying (Used with 07-00013-00)
07-00219-00	Wrench, Compressor Sight Glass
07-00221-00	Inspection Light with Mirror
07-00228-00	Volt-Ohmmeter, Digital
07-00229-00	Amprobe Clamp (Used with 07-00228-00)
07-00238-00	Wrench, Service Valve
07-00243-10	Multimeter, Digital (Fluke)
07-00263-00	Pliers, Crimping (Used for compressor terminal block replacement)
07-00264-00	Grip, Wire Vise (Used for compressor terminal block replacement)
07-00277-00	Kit, Static Dissipative (Used for working on electronic components)
07-00304-00	Ground Strap, Wrist (Used for working on electronic components)
07-00294-00	Gauge Set, Manifold - Fahrenheit/PSI
07-00294-05	Gauge Set, Manifold - Centigrade/KPa
07-00295-00	Detector, Leak
07-00326-00	Extractor, Pin (Used on Fan Motor Plugs and Interrogator Plugs)
07-00327-00	Crimper, Pin (Used on Fan Motor Plugs and Interrogator Plugs)
07-00329-00	Extractor, Pin (Used on Controller module connectors)
07-00330-00	Crimper, Pin (Used on Controller module connectors)
07-00370-00	Crimper, Pin (Used on Stepper Valve, HPS)
07-00371-00	Extractor, Pin (Used on Stepper Valve, HPS)
07-00375-00	Tester, Portable, Stepper Motor Drive
07-00391-00	Application Gun (Used with 07-00390-00)
07-00398-00	Software Card Programmer
07-00408-00	Stepper Jumper Assembly
07-00418-00	Torx Driver Bit
07-00409-00	1-1/8", 3/8" Drive, u/o economizer valve
07-00410-00	1-3/8", 3/8" Drive, u/o suction/discharge valve
07-00411-00	2-1/8", 3/8" Drive, u/o SMV
Refer to Manual 62-03213	

PART NUMBER INDEX

PART NO.	PAGE NO.	PART NO.	PAGE NO.	PART NO.	PAGE NO.
02-00082-00, 7		10-00333-01, 9		14-01091-01, 19, 22	
04-50027-00, 14, 27		10-00333-02, 9		14-01091-02, 29	
04-50027-01, 27		10-00366-01SV, 9		18-00077-20, 33, 44	
07-00013-00, 46		10-01129-07, 9		18-00077-41, 33, 44	
07-00013-01, 46		10-01129-10, 9		22-00041-00, 1	
07-00013-02, 46		10-0298-01, 8		22-00041-02, 1	
07-00013-03, 46		12-00275-04SV, 13		22-00066-01, 1	
07-00015-00, 46		**Empty**, 7, 13		22-00066-02, 1	
07-00219-00, 46		12-00275-17SV, 13		22-00066-03, 1	
07-00221-00, 46		12-00275-19SV, 13		22-00119-04, 1	
07-00228-00, 46		12-00309-05, 35		22-00120-04, 1	
07-00229-00, 46		12-00352-00, 35		22-00120-07, 1	
07-00238-00, 46		12-00352-07, 35		22-00121-07, 1	
07-00243-10, 46		12-00352-07SV, 35		22-00595-01, 1	
07-00263-00, 46		12-00377-01, 41		22-01106-00, 1	
07-00264-00, 46		12-00395-01SV, 21		22-01107-00, 1	
07-00277-00, 46		12-00397-00/5308, 11		22-01139-04, 1	
07-00294-00, 46		12-00402-45, 11		22-01140-01, 1	
07-00294-05, 46		12-00413-05SV, 41		22-01140-02, 1	
07-00295-00, 46		12-00433-00RP, 13		22-01140-04, 1	
07-00304-00, 46		12-00493-05, 17		22-01141-01, 1	
07-00313-00, 1		12-00493-06, 29		22-01556-00, 13	
07-00321-07/2.4, 41		12-00495-20, 20, 29		22-01556-01, 11	
07-00326-00, 46		12-00500-01SV, 29		22-01556-02, 11	
07-00327-00, 46		12-00528-00, 41		22-01556-06, 11	
07-00329-00, 46		12-55458-00/5308, 45		22-01556-07, 11	
07-00330-00, 46		12-55484-00, 11		22-01613-14, 27, 43	
07-00345-00, 1		14-00176-04, 17		22-01613-15, 27	
07-00370-00, 46		14-00220-04, 20		22-01613-34, 27	
07-00371-00, 46		14-00221-03, 20		22-01614-02, 27	
07-00375-00, 46		14-00222-01, 19		22-01614-03, 27	
07-00390-00, 7		14-00232-08, 19		22-01614-05, 27	
07-00391-00, 7, 46		14-00263-05, 29		22-01621-02, 13	
07-00398-00, 46		14-00263-20, 29		22-01621-03, 13	
07-00406-00, 41		14-00273-02, 29		22-01621-23, 11	
07-00408-00, 46		14-00284-20, 19		22-01622-00, 11	
07-00418-00, 46		14-00285-00, 19, 22		22-01622-01, 11	
09-00369-00SV, 11		14-00311-00, 19		22-01622-02, 11	
10-00318-00, 29		14-01032-14, 20		22-01660-03, 43	
10-00332-21SV, 9		14-01090-11, 29		22-01713-02, 13	
10-00333-00, 9		14-01090-12, 19		22-01713-06, 11	

PART NUMBER INDEX

PART NO.	PAGE NO.	PART NO.	PAGE NO.	PART NO.	PAGE NO.
22-01713-12,	35	34-00373-54,	19	34-06185-01,	25
22-01737-00,	41	34-00373-59,	1, 37	34-06211-01,	9
22-01737-01,	41	34-00373-65,	1	34-06212-12,	25
22-01737-02,	41	34-00373-67,	1	34-06223-00,	9, 13
22-01743-00,	41	34-00373-69,	1, 29	34-06224-01,	9
22-01777-00SV,	11	34-00373-71,	1	34-06227-00,	9
22-01777-01SV,	11	34-00655-04,	33	34-06231-01,	7
22-01777-03,	11	34-00655-10,	27	34-06231-03,	7
22-01777-04,	11	34-00662-08,	9	34-06231-05,	7
22-01777-05,	11	34-00663-07,	9	34-06231-06,	7
22-01892-00,	27	34-00663-11,	15	34-06231-07,	7
22-01892-01,	27	34-00665-09,	5	34-06236-00,	33, 44
22-01914-01,	33	34-00667-05,	9	34-50015-00,	7
22-02324-01,	37	34-00667-11,	19, 33, 37	38-00503-00,	14
22-02336-02,	1, 11	34-00667-12,	14, 27	40-00520-01,	19
22-02336-04,	1, 11	34-00667-13,	33	40-00520-02,	17
22-02341-00,	9	34-00792-10,	27	40-00520-03,	17
22-02341-01,	9	34-00848-10,	9	40-00542-00,	17
22-02368-00,	9	34-00928-01,	7, 9	40-00542-01,	17
22-02378-00,	37	34-00928-02,	7, 31	40-00583-00,	17
22-02392-03,	29	34-00928-09,	31	40-00583-01,	17
22-02393-01,	29	34-01142-01,	7, 9	40-00585-00,	17
22-02394-03,	29	34-01167-01,	5	40-00586-00,	17
22-02396-02,	13	34-01178-22,	29	40-00622-00,	17
22-02396-03,	13	34-01181-01,	14, 27	40-50025-00,	17
22-02401-00,	41	34-06053-00,	5, 14, 19, 20, 22, 33	42-00174-34,	31
22-02418-02,	41	34-06053-02,	14, 33	42-00270-00,	5
22-02420-00,	41	34-06053-03,	14, 15, 34, 36, 37	42-00296-00,	25
22-50007 Series,	1	34-06053-05,	5, 17, 19, 33	42-00296-01,	25
22-50088-00,	27	34-06053-13,	25	42-00327-00,	25
22-50088-01,	27	34-06053-18,	23	42-00334-00,	31
22-50088-02,	14	34-06053-19,	25	42-00384-01,	17, 33, 44
22-50100-00,	11	34-06053-20,	33, 44	42-00384-02,	17, 33, 44
22-50157-00,	11	34-06060-03,	33	42-00389-00,	19
24-00006-02,	29	34-06107-00,	5	42-00390-00,	19
30-00407-02SV,	11	34-06139-03,	7	42-00407-00,	25
34-00373-05,	1, 19	34-06154-00,	25	42-00465-00,	23
34-00373-07,	1, 17, 19	34-06169-00,	5, 15	42-01052-02,	25
34-00373-11,	1	34-06174-03,	33	44-00300-01,	5
34-00373-51,	1	34-06174-04,	33	44-00300-02,	5
34-00373-53,	1, 17	34-06179-00,	15	44-00300-03,	5

PART NUMBER INDEX

PART NO.	PAGE NO.	PART NO.	PAGE NO.	PART NO.	PAGE NO.
44-00343-00, 7		62-02721-07, 39		66U1-5371, 22	
44-00370-08, 17		62-02723-13, 39		66U1-5371-10, 29	
44-00374-00, 15		62-02735-00, 11		66U1-5371-13, 29	
44-01043-05, 1		62-02738-04, 11		66U1-5371-6, 17	
44-01043-07, 1		62-02738-08, 11		66U1-5371-7, 5, 9, 11, 13, 19, 29	
48-00350-01SV, 33, 44		62-02743-16, 39		66U1-5381-1, 37	
54-00549-00, 14		62-02783-00, 25		66U1-5391-2, 9	
54-00578-00, 27		62-03957-01, 7		66U1-6651-4, 9	
58-00967-00, 9		62-10259-00, 39		66U1-6811-12, 15	
58-01184-00, 11, 13		62-10532-00, 39		66U1-6811-15, 5	
58-04026-07, 37		62-10716-00, 39		66U1-6811-8, 5, 15	
58-04026-22, 36		62-10717-00, 39		66U1-6835, 9	
58-04026-26, 29		62-10720-00, 39		66U1-6912-16, 29	
58-04026-33, 20		65-00184-20, 22		66U1-7472-1, 1	
58-04026-34, 22		66CH1-1082-19, 27		66U1-7842-13, 9	
58-04026-41, 15		66CH1-1172-46, 9		66U1-7982-2, 31	
58-04101-00, 5		66U1-2403, 7, 31		66U1-8912, 15	
58-04101-01, 5		66U1-2403-1, 5		66U1-9212-1, 13	
58-04101-07, 15		66U1-2583, 37		66U1-9752, 8, 9	
58-04145-00, 9		66U1-2603, 36		66U1-9782, 37	
58-04145-01, 9		66U1-3442-2, 13		66U2-1132-2, 19, 22	
58-04145-06, 8		66U1-3632-20, 17		68-12553-00, 43	
58-04251-00, 25		66U1-3803, 1, 19, 22		68-12658-01, 34	
58-04260-00, 9		66U1-3803-1, 1		68-12863-00, 19	
58-04346-00, 5		66U1-5321-13, 25		68-12864-00, 19	
58-04366-00SV, 5		66U1-5321-2, 22		68-12993-00, 33	
58-04367-02, 7		66U1-5321-3, 23, 27, 29		68-13167-00, 19	
58-04435-00, 33, 44		66U1-5321-5, 27, 33		68-13181-00, 29	
58-04451-00, 33, 44		66U1-5321-6, 9		68-13427-00SV, 9	
58-04461-00, 33, 44		66U1-5321-7, 14, 19, 20, 22, 33, 34, 36, 37		68-13432-02, 15	
58-04461-01, 33, 44		66U1-5321-8, 5, 9, 17, 19, 29, 33		68-13432-03, 15	
58-04463-00, 33		66U1-5331-3, 5		68-13577-00, 5	
58-04481-00, 15		66U1-5331-4, 22		68-14038-00, 31	
58-04533-00, 31		66U1-5361, 14		68-14040-00, 31	
58-50014-00, 19		66U1-5361-11, 33, 37		68-14045-00, 31	
62-02444-01, 39		66U1-5361-25, 14, 15, 19, 20, 22, 23, 27, 29, 33, 34, 36		68-14046-00, 31	
62-02458-00, 39		66U1-5361-47, 33		68-14050-00, 31	
62-02530-01, 39		66U1-5361-7, 27		68-14085-00, 14	
62-02562-01, 39		66U1-5362-2, 25		68-14107-00, 29	
62-02575-07, 41				68-14113-00, 19	
62-02719-00, 11					

PART NUMBER INDEX

PART NO.	PAGE NO.	PART NO.	PAGE NO.	PART NO.	PAGE NO.
68-14138-00, 33		69NT35-8693-8, 15		79-01706-03SV, 9	
68-14139-00, 33, 44		69NT35-8693-9, 15		79-01785-00, 20	
68-14142-00, 17		69NT41-192, 43		81-01539-12, 19	
68-14148-00, 31		69NT41-782, 19		81-01681-00SV, 15	
69NP20-1031, 19		69NT41-942-10, 31		81-01682-00, 29	
69NT35-1662, 27		69NT41-982-3, 9		86-04405-00, 33	
69NT35-1662-1, 27		69NT42-688-7, 5		86-04406-00, 33	
69NT35-2287, 7		69NT43-124-2, 7		86-04466-00, 27	
69NT35-2692, 11, 31		69NT43-125-1, 7		86-04478-00, 27	
69NT35-2692-1, 15, 23, 29, 34		69NT43-176, 43		86-04481-00, 27	
69NT35-2692-4, 13, 19		69NT43-277, 19		86-04482-00, 27	
69NT35-3867, 39		69NT43-307, 23			
69NT35-3907, 39		76-00397-00, 1		A	
69NT35-4047, 23		76-00675-01, 29		AU11JR171, 29	
69NT35-5992, 36		76-00704-01, 15			
69NT35-6112, 14		76-00724-00SV, 7		E	
69NT35-6272, 7		76-50058-00, 41		EC39DM062, 20	
69NT35-6278, 9		76-50059-00, 41		EC39DM070, 35	
69NT35-6412, 37		76-50075-00, 15			
69NT35-6412-1, 37		76-50084-00SV, 7		K	
69NT35-6412-2, 37		79-01695-02, 25		KA66FA138, 29	
69NT35-6532, 29		79-01697-12, 25			
69NT35-8382, 36		79-01697-13, 25			